



Luxury Home Textiles

## Lewis Borders



[www.vayahome.com](http://www.vayahome.com)  
[sales@vayahome.com](mailto:sales@vayahome.com)



The Lewis Borders collections embrace nature and geometry to create unique and inspired borders to elevate any piece or space. Designed to add elegance, detail, touches of grandeur or whimsy, and spark interest, they come alive in a spectrum of enchanting hues, from muted pastels to bold shades. Masterfully playing with light and dimension, they add sophistication and charm.



**Above — Borders Top to Bottom** Reynolds Slate, Hemsley Egret



**Above — Borders Left to Right** Vatican Birch, Vatican Harbor



**Border — Front Lamp** Metropolitan Oatmeal





**Above — Top to Bottom** Cooper Smoke Blue, Cooper Salmon, Cooper Egret  
**Right — Top to Bottom** Maxwell Winter, Maxwell Frost





**Above — Border Left** Hilton Mineral Blue **Right** Hemsley Egret  
**Left — Borders Top** Walker Blue Haven **Bottom** Cooper Smoke Blue  
**Top Right** Crofton Silver Lining **Bottom Left** Oslo Colony Blue



**Front Lamp** Henderson Safari Blue





**Above — Left to Right** Henderson Safari Blue, Henderson Khaki  
**Right — Top to Bottom** Walker Blue Haven, Cosway Biscotti



**Above** — Cheston Garden Glade  
**Right** — Henderson Turtledove, Henderson Harbor Grey



**Borders** Oslo Smoked Pearl, Oslo Honey Gold, Oslo Marshmallow



**Above — Borders** Allan Mauve Wood, Allan Chinois Green  
**Left — Borders Top to Bottom** Colosseum Cranberry, Colosseum Turtledove, Colosseum Sapphire, Colosseum Driftwood



**Borders — Right to Left** Cosway Crockery,  
Metropolitan Oatmeal, Hemsley Egret



Above — Borders Cosway Chocolate, Cosway Biscotti, Cosway Apricot, Cosway Crockery, Cosway Iceberg Green



**Above — Borders Top to Bottom** Ramsay Apricot,  
Ramsay Rattan, Ramsay Sky Grey  
**Right — Borders** Ramsay Rattan, Ramsay Chocolate,  
Ramsay Sky Grey, Ramsay Stellar





**Above — Borders Left to Right** Crofton Pelican, Crofton Blue Surf, Crofton Rattan, Crofton Cloud Blue, Crofton Silver Lining





**Above — Borders Top to Bottom** Maxwell Oyster Grey, Maxwell Bronze  
**Right — Borders Top to Bottom** Douglas Graphite, Maxwell Oyster Grey, Cosway Chocolate





Above — Borders Top to Bottom Nicholson Parchment, Nicholson Trellis, Nicholson Rose



Allan Chinois Green



Allan Mauve Wood

**Allan**

Allan offers a soft caress with its velvet weave, its stary geometry enticing with a gentle lustre. This border adds plush comfort and ageless charm to a space.

Composition: 48% Cotton, 52% Viscose



Cheston Garden Glade

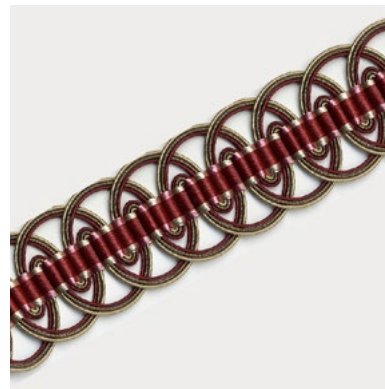


Cheston Mineral Blue

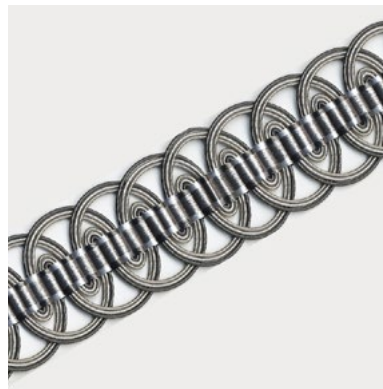
**Cheston**

A slice of a seamless flow of interlocking shapes, Cheston melds structure with indulgence. Soft velvet invites both touch and admiration, while the concentric arrangement weaves together colour and texture for an evocative sensory experience.

Composition: 48% Cotton, 51% Viscose



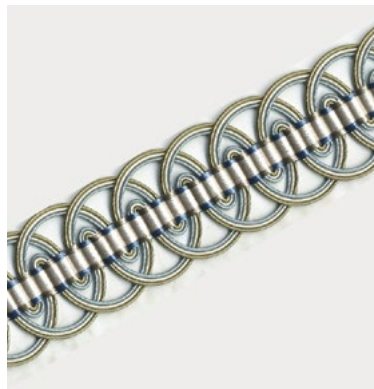
Colosseum Cranberry



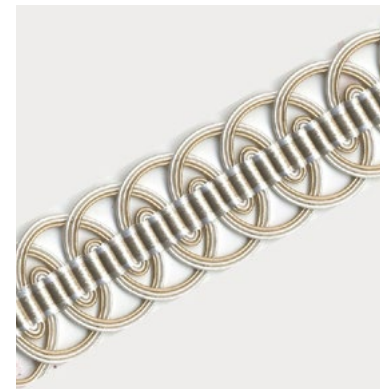
Colosseum Driftwood



Colosseum Pebble



Colosseum Sapphire



Colosseum Turtledove

**Colosseum**

Fine yarn and cord twist and curve in Colosseum, mirroring arcs of light weaving in and out around the central column. Majestic and bright, Colosseum makes the use of brightness and space to delight.

Composition: 51% Polyester, 33% Cotton, 16% Viscose



Cooper Chocolate



Cooper Egret



Cooper Pumice Stone



Cooper Salmon



Cooper Smoke Blue

**Cooper**

Slender columns of checks frame Cooper, a border created with an array of colours and stitches. Spanning its width, criss-crossing cords create pools of colour and texture with a stylish, polished look.

Composition: 100% Linen



Cosway Apricot



Cosway Biscotti



Cosway Chocolate



Cosway Crockery

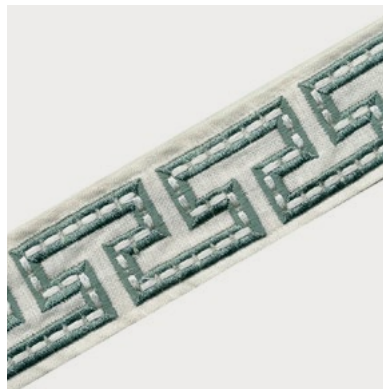


Cosway Iceberg Green

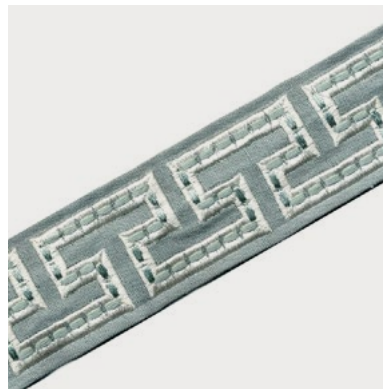
**Cosway**

A winsome floral design exudes an ethereal elegance in Cosway. Bursts of dual-toned flowers alternate with gentle sprigs of leaves along a sinuous stem. Flanked by strings of fine leaves on either side, Cosway brings a touch of enchantment.

Composition: 100% Linen



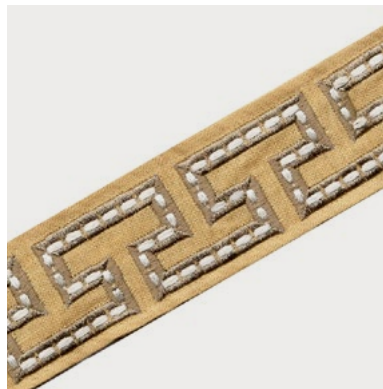
Crofton Blue Surf



Crofton Cloud Blue



Crofton Pelican



Crofton Rattan



Crofton Silver Lining

**Crofton**

Sharp lines and neat stitches form a meandering path in Crofton, giving it a labyrinthine look at first glance. Thick yarn accents the center, adding a touch of luxury accentuated by the shine against the matte of the base.

Composition: 100% Linen



Douglas Graphite



Douglas Grey Mist

**Douglas**

The Douglas border is sumptuous to the touch, with its baroque pattern in soft velvet epingle. Its wide design and layered appearance gives it depth that enhances its shine and gives it a timeless air.stery.

Composition: 48% Cotton, 52% Viscose



Hayman Flint Grey



Hayman Lichen



Hayman Rattan



Hayman Salmon Grey

**Hayman**

Conjuring the image of a bird's-eye view of a string of serene islands, with the surf crashing gently against their shores, Hayman sets a tranquil scene through 3D effects and a textured base.

Composition: 62% Viscose, 14% Linen, 24% Cotton



Hayman Birch



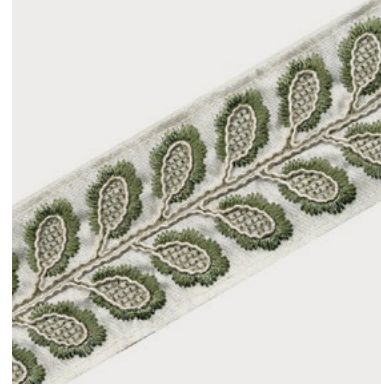
Hayman Sky



Hemsley Egret



Hemsley Lily Green



Hemsley Sage



Hemsley Salmon



Hemsley Silver

**Hemsley**

With its cheery embroidered vine with oval leaves, Hemsley harmonizes both order and freeform. Its neat checkered centers paired with the straight stitches that fan out effortlessly blend finesse and whimsical sophistication.

Composition: 9% Polyester, 45% Cotton, 46% Viscose



Henderson Harbor Grey



Henderson Khaki



Henderson Safari Blue



Henderson Turtledove

**Henderson**

Henderson's cord embroidery follows an undulating path to create a detailed and delicate pattern. Its colours come together in a playful choreography that blends elegance with vibrance to make a border that is bold and intriguing.

Composition: 100% Linen



Hilton Garden Glade



Hilton Mineral Blue

**Hilton**

Organic meets geometric in Hilton, as a garden kaleidoscope comes to life with soft textures, subtle colors, and captivating shapes, elevating charm and infusing a space with comfort.

Composition: 48% Cotton, 52% Viscose



Maxwell Bronze



Maxwell Frost



Maxwell Oyster Grey

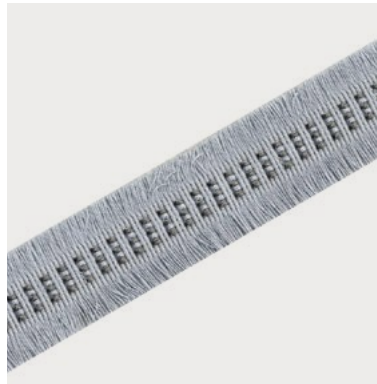


Maxwell Winter

**Maxwell**

Resplendent in fine metallic embroidery, dainty peacock feathers adorn Maxwell. Scintillating webs of zari form the artful curves of the motifs, lending them an ethereal quality.

Composition: 100% Polyester



Metropolitan Glacier



Metropolitan Oatmeal

**Metropolitan**

Metropolitan's border is a stunning combination of astonishingly soft and supple fringed edges that perfectly complement its rows of neat stitches, adding a layer of gently brushing movement to this exquisite design.

Composition: 85% Polyester, 15% Viscose



Nicholson Parchment



Nicholson Rose

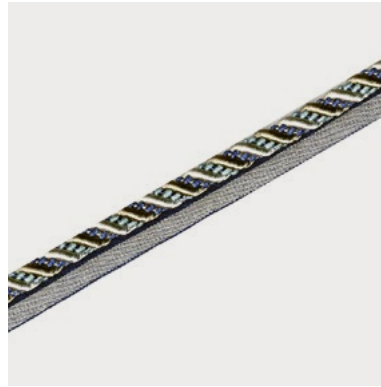


Nicholson Trellis

**Nicholson**

Flowers emerge from the soft, billowy spirals in Nicholson. Each petal exudes its own sense of light and shadow through the dual-toned embroidery, culminating in a broad, whimsical border pattern.

Composition: 100% Linen



Oslo Colony Blue



Oslo Honey Gold



Oslo Marshmallow



Oslo Smoked Pearl

**Oslo**

Thick cords entwine to create Oslo, a robust border ideal for upholstery. Oslo lends a polished and finished look to a space, effortlessly achieving a sense of completion and refinement.

Composition: 34% Polyester, 62% Cotton, 4% Acrylic



Ramsay Chocolate



Ramsay Marshmallow



Ramsay Rattan



Ramsay Sky Grey

**Ramsay**

Through its twists and turns, Ramsay's unbroken lines detail out a gorgeous floral motif, its slender tendrils almost swaying on the fabric. Ramsay's intricacies and winding style bring a poetic note to a space.

Composition: 100% Linen



Ramsay Apricot



Ramsay Stellar





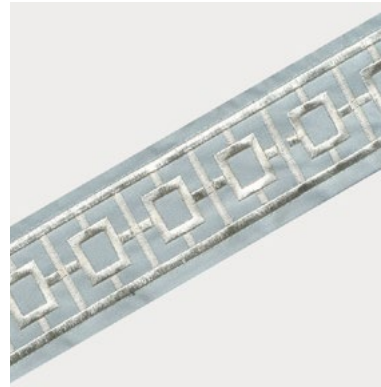
Reynolds Lichen



Reynolds Metal



Reynolds Oyster



Reynolds Glacier



Reynolds Chocolate



Reynolds Slate

**Reynolds**

Neat, straight lines create a symphony of order in Reynolds. Its embroidery bright against a gentle pastel base, Reynolds exudes a chic and classic sophistication with its simplicity and precision.

Composition: 41% Polyester, 59% Cotton



Vatican Birch



Vatican Harbor

**Vatican**

Vatican blends classical elegance and an air of historic splendour through metallic accents, soft embroidered columns, and the gentle sheen of the exposed weft fringing its edges. Embellished with care, Vatican is a stately border.

Composition: 26% Polyester, 5% Cotton, 22% Acrylic, 47% Viscose



Walker Blue Haven



Walker Grey



Walker Jet Black



Walker Redwood



Walker Walnut

**Walker**

Walker's pattern swoops in banded lines flowing and connecting to forming gentle curves and peaked corners. The rhythmic contrasts of alternating light and dark give it a charming, dynamic effect.

Composition: 100% Linen



Luxury Home Textiles

VAYA Home designs, curates and produces textiles for drapery and upholstery in a variety of fibers and tactile techniques.

Leveraging decades of textile design and production expertise, the Jaipuria Mill in collaboration with international creatives, conceived the VAYA Home brand to weave thoughtfully constructed fabrics for interior decorators globally.

Combining hand crafted arts with machine exacted techniques unique to the mill, the VAYA collections aim to delight and surprise through the use of pattern, materials, and colors in their textiles.

Our products are sold through leading retailers as cut length yardage and are suitable for residential and commercial application.

[www.vayahome.com](http://www.vayahome.com)  
[sales@vayahome.com](mailto:sales@vayahome.com)