



Luxury Home Textiles

# Celestial Weaving

[www.vayahome.com](http://www.vayahome.com)  
[sales@vayahome.com](mailto:sales@vayahome.com)





A collection of weaves inspired by galaxies and the varied terrains of Earth, Celestial Weavings draw upon a fascination with the world around and above us. These fabrics seamlessly blend earth tones with shine effects, mimicking natural textures and incorporating inspired patterns into a space through innovative texture and design.



**Curtain** Interstellar Alabaster  
**Armchair** Fractals Oyster Grey  
**Cushions** Nimbus Angora, Fractals Sepia



Estuary Almond Buff



Estuary Oceanview



Estuary Pistachio Shell



Estuary Sedona Sage



**Above** — Nebulous Hemp  
**Right** — **Curtain** Nebulous Oyster White



**Above** — Zenith Alabaster

**Right** — **Curtain** Zenith Marshmellow **Cushion** Vortex Marshmellow





**Sofa** Botticino Oatmeal **Cushions Left to Right** Vortex Ink, Terraflair Stone Grey, Skyline Ink, Botticino Storm Grey **Curtain** Skyline Warm Sand



Terraflair Alabaster



Terraflair Driftwood

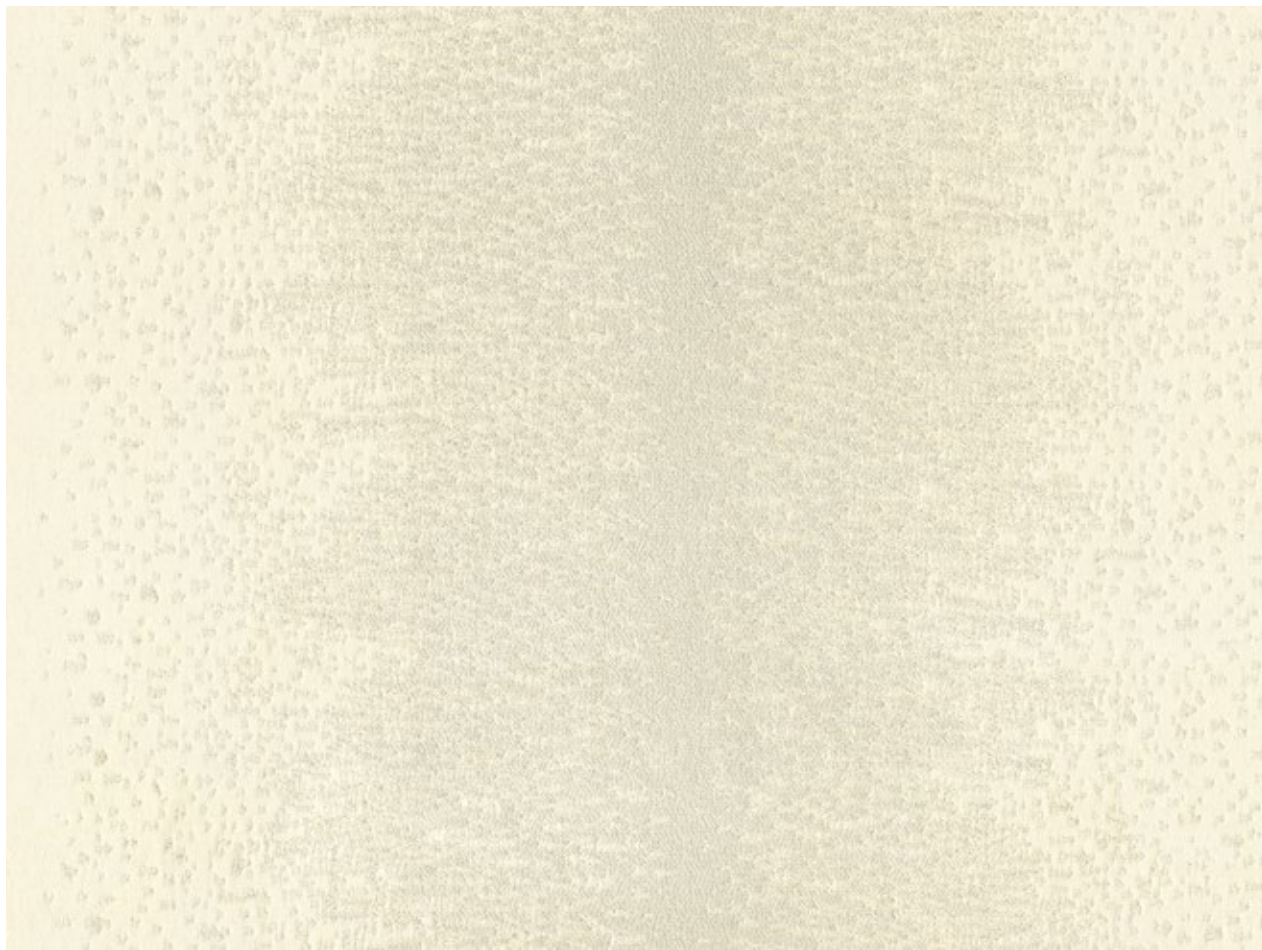
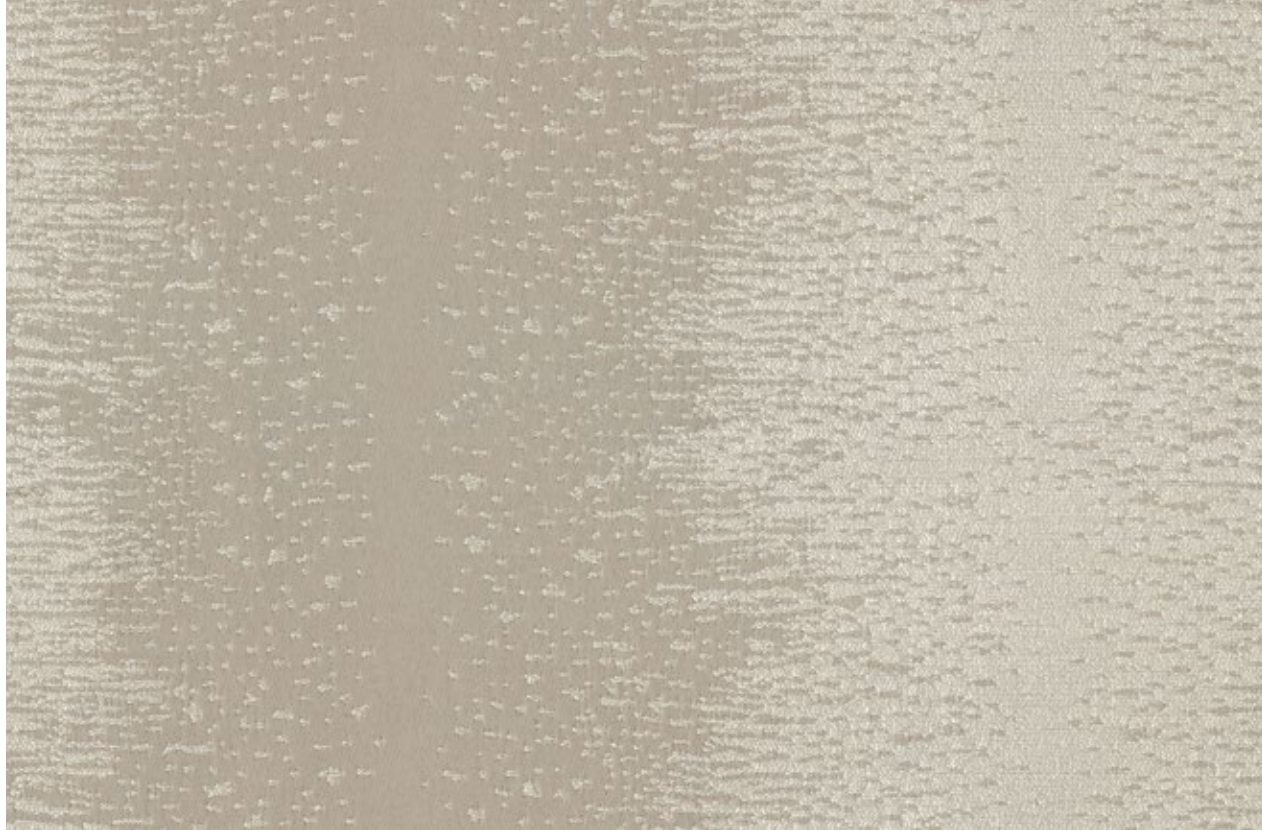


Terraflair Graphite



Terraflair Sea Foam





**Above** — Galactic Glacier Gray **Top left** — Galactic Simply Taupe  
**Bottom left** — Galactic Alabaster

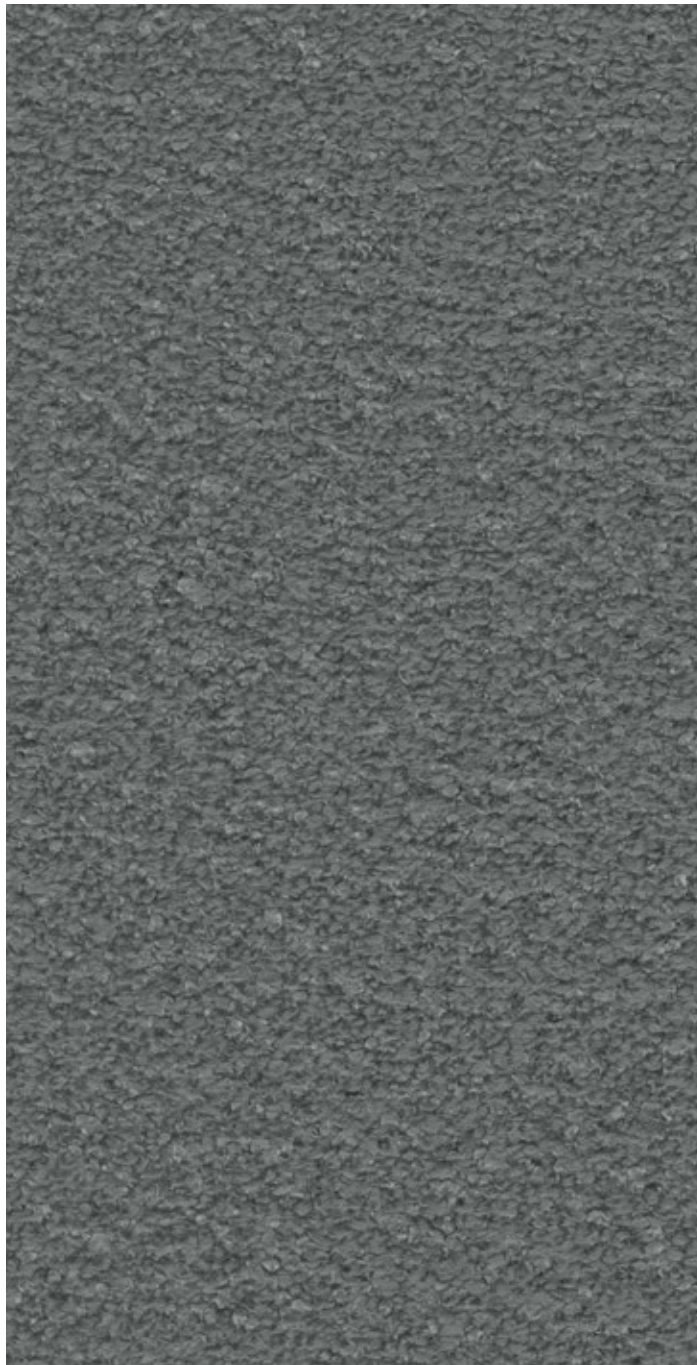


**Curtain** Cirrus High Park Blue

**Armchair** Vortex Sea Foam **Pouf** Botticino Tobacco Brown



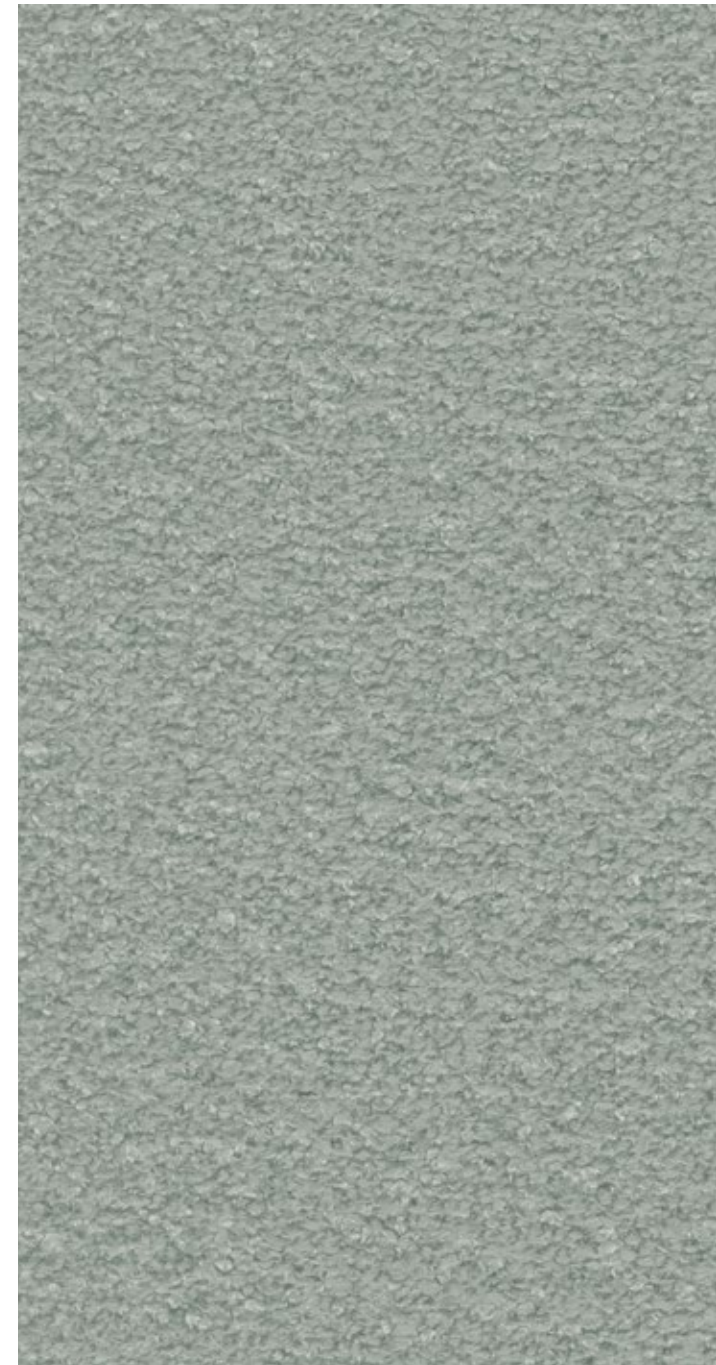
Cirrus Chanterelle Beige



Cirrus Charcoal



Cirrus Feather Grey



Cirrus High Park Blue



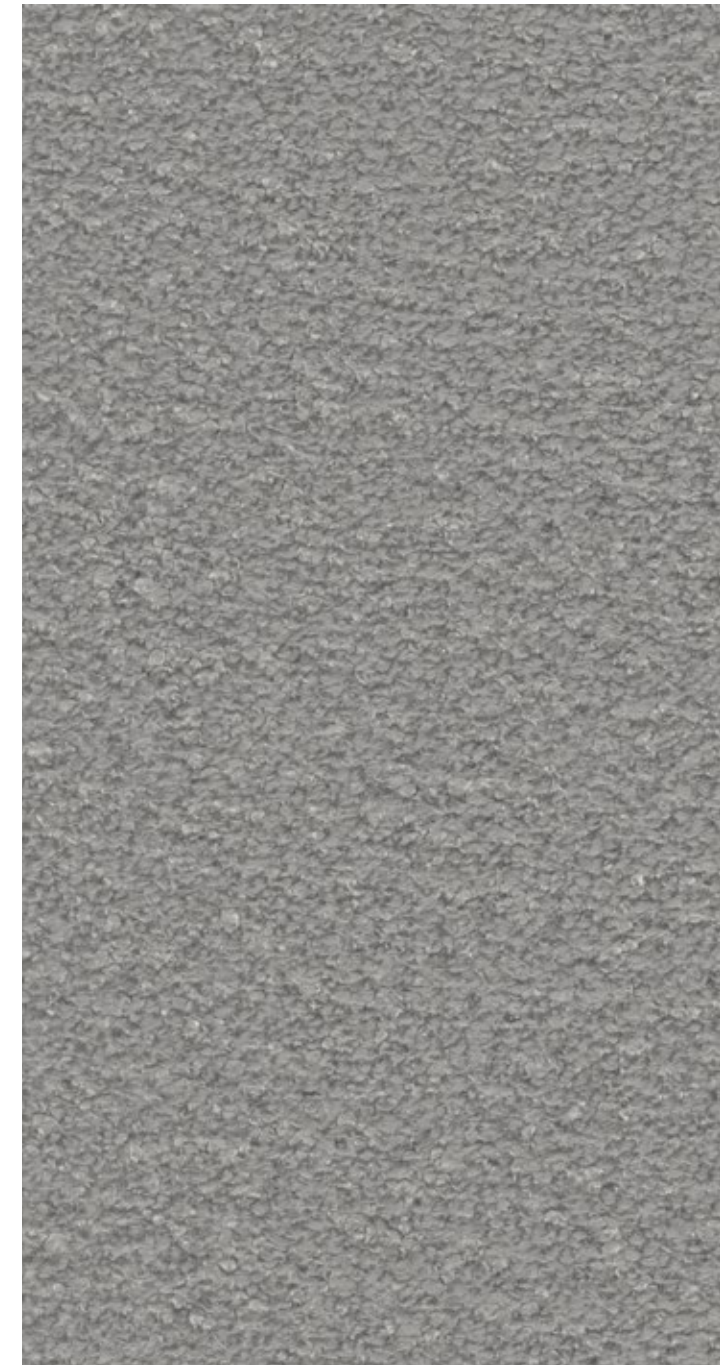
Cirrus Marshmallow



Cirrus Mysterious Blue



Cirrus October Mist



Cirrus Seal Grey



**Above** — Mirage Driftwood  
**Left** — Curtain Skyline Driftwood



Mirage Alabaster



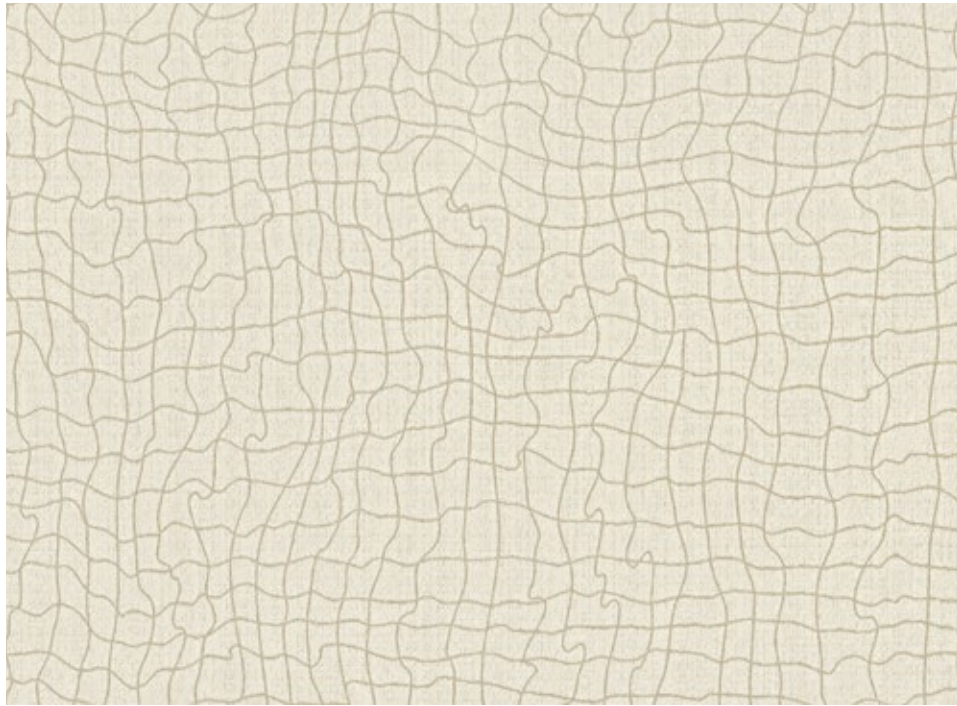
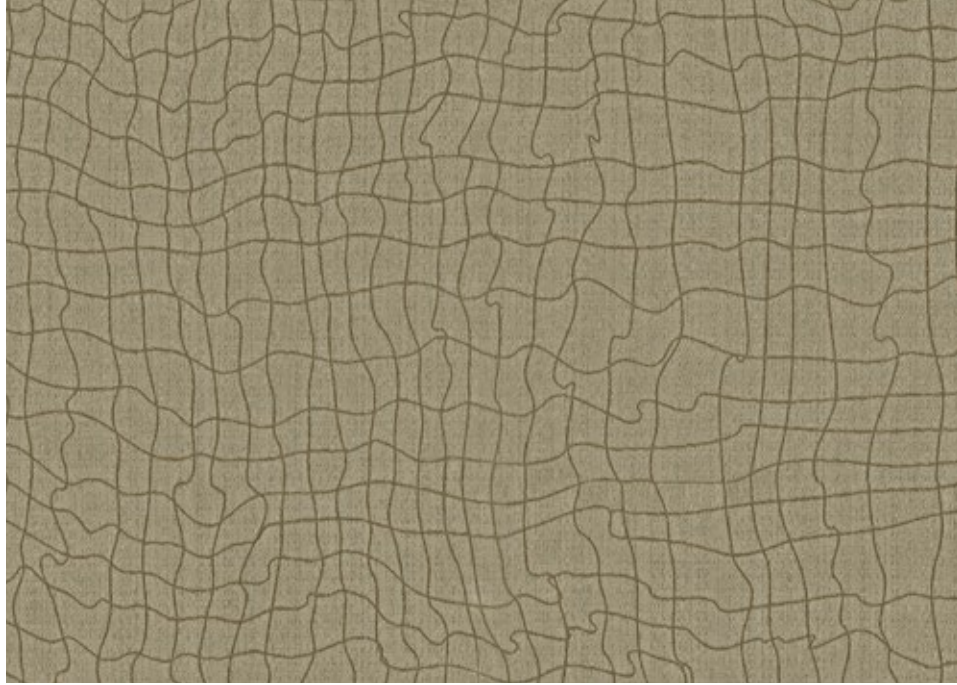
Mirage Eimwood



Mirage Ink



Mirage Sea Foam



**Above — Top** Interstellar Alabaster **Bottom** Interstellar Driftwood  
**Right — Curtain** Interstellar Stone Grey



Vortex Driftwood



Vortex Grey Stone



Vortex Ink



Vortex Sea Foam





**Above** — Vortex Marshmellow

**Left** — **Cushion** Fractals Sepia **Pouf** Vortex Marshmellow **Curtain** Night Sky Alabaster



Night Sky Grey Stone



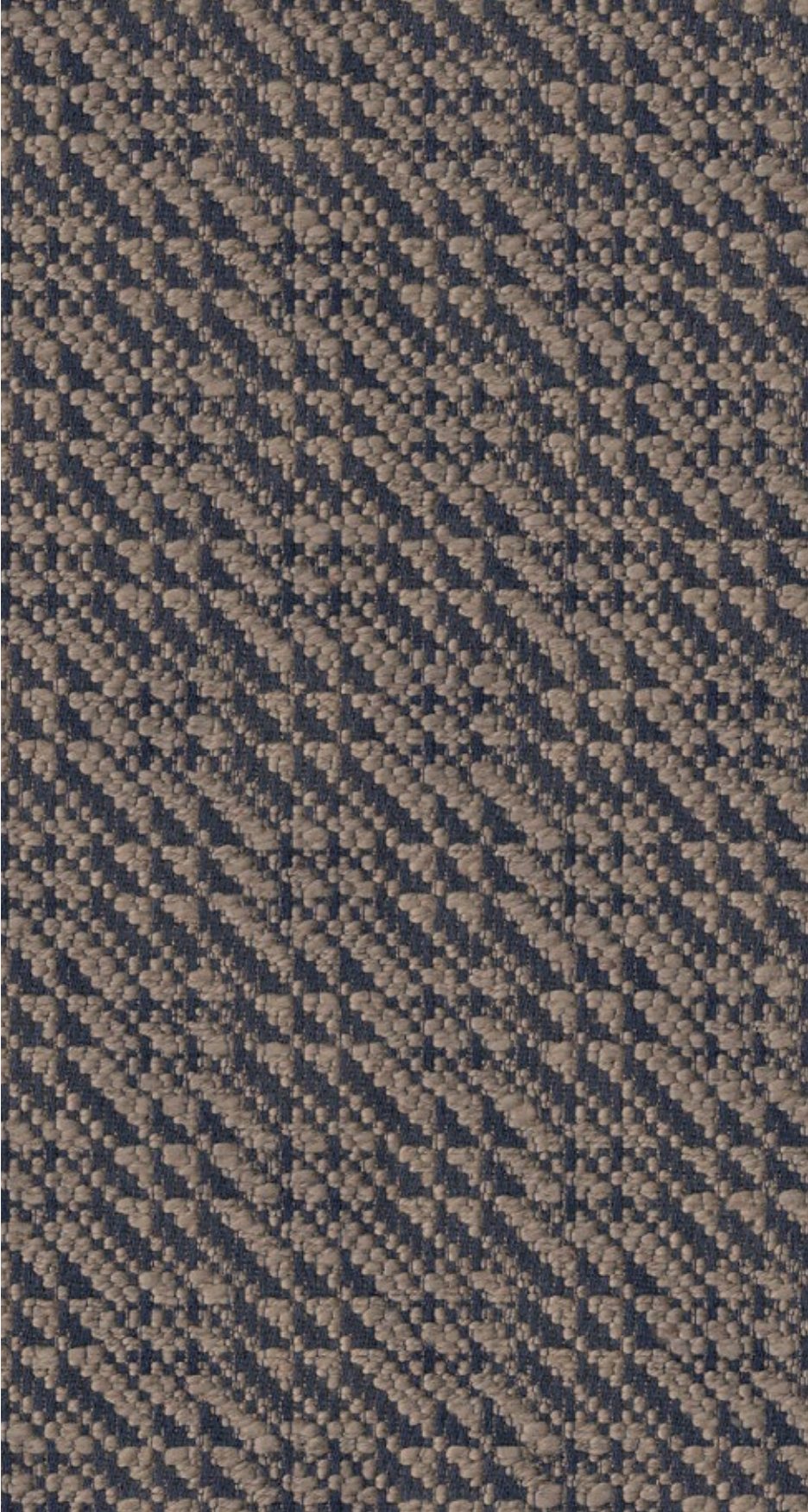
Night Sky Pale Khaki



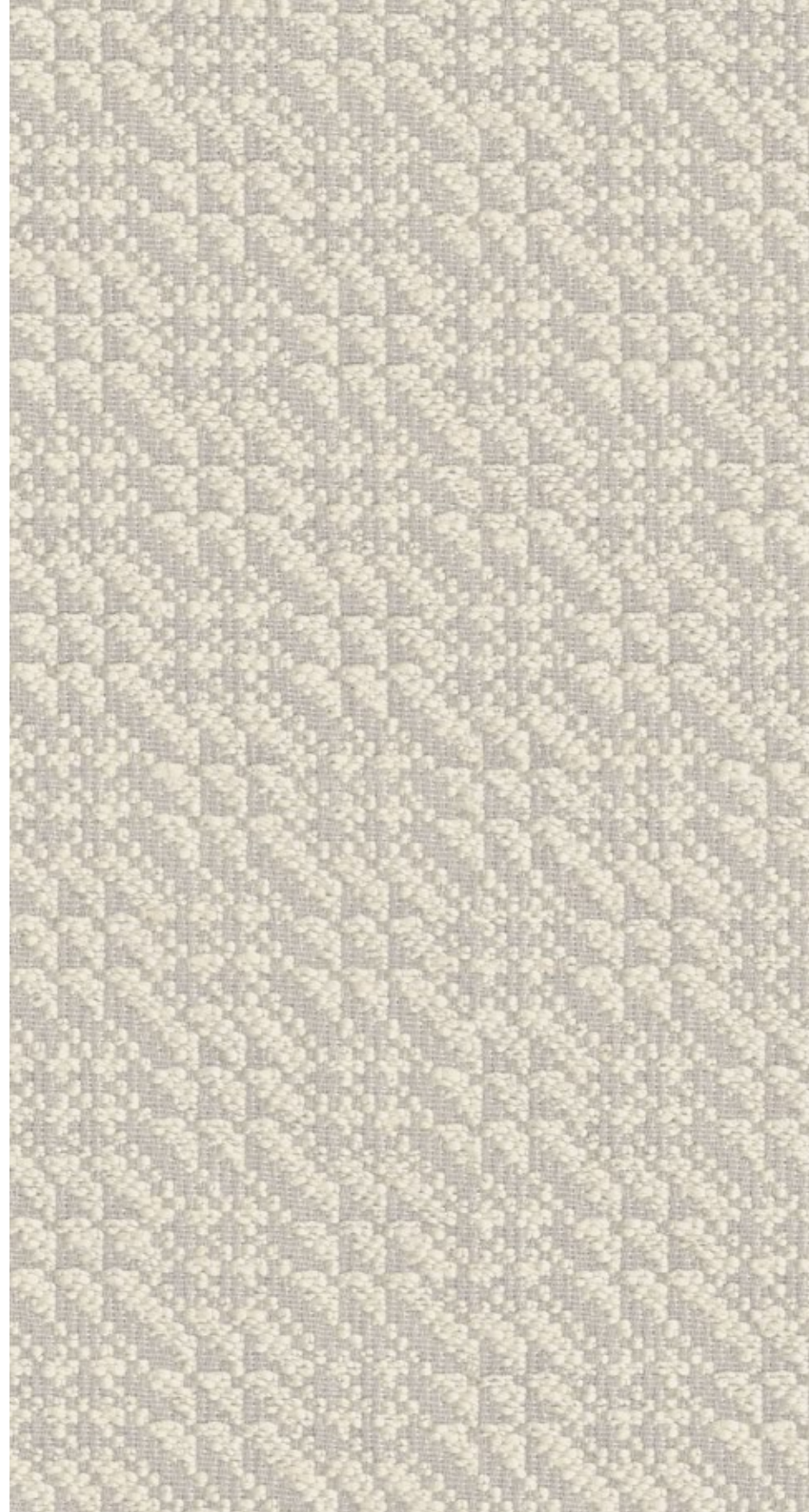
Night Sky Turtle dove



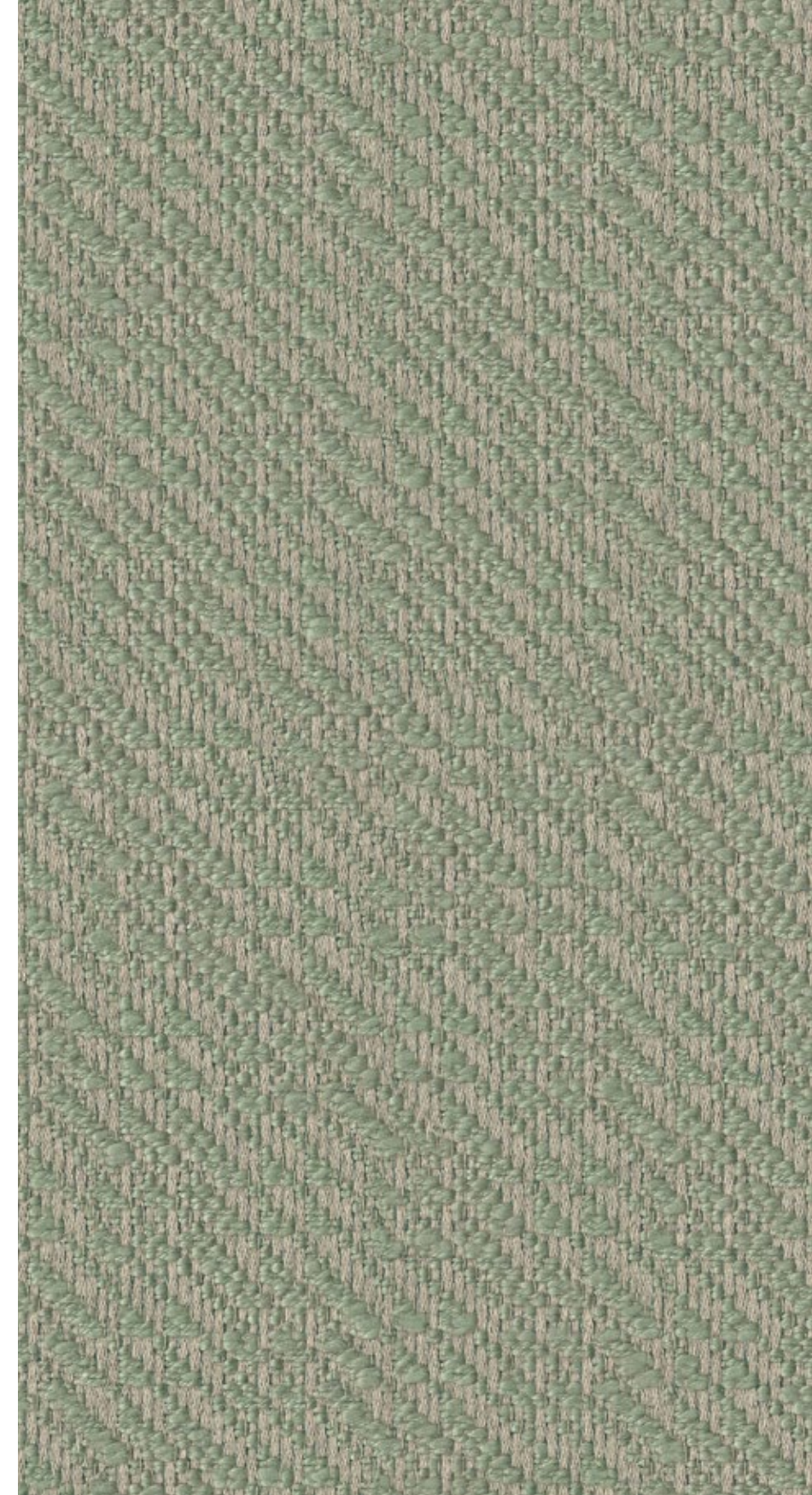
**Above — Top** Fractals Sepia **Bottom** Tidal Marshmallow  
**Right — Pouf Left** Botticino Tobacco Brown **Pouf Right** Nimbus Angora  
**Bottom** Fractals Alabaster



Fractals Ink



Fractals Oyster Grey



Fractals Sea Foam



**Sofa** Fractals Sepia  
**Cushion** Comet Alabaster



Comet Alabaster



Comet Driftwood



Comet Greystone



Comet Ink



**Fabrics — Top to Bottom** Nebulous Oyster White, Night Sky Alabaster, Skyline Ink, Interstellar Stone Grey, Skyline Sea Foam, Cirrus Marshmellow



Celestia Alabaster



Celestia Driftwood



Celestia Pure Cashmere

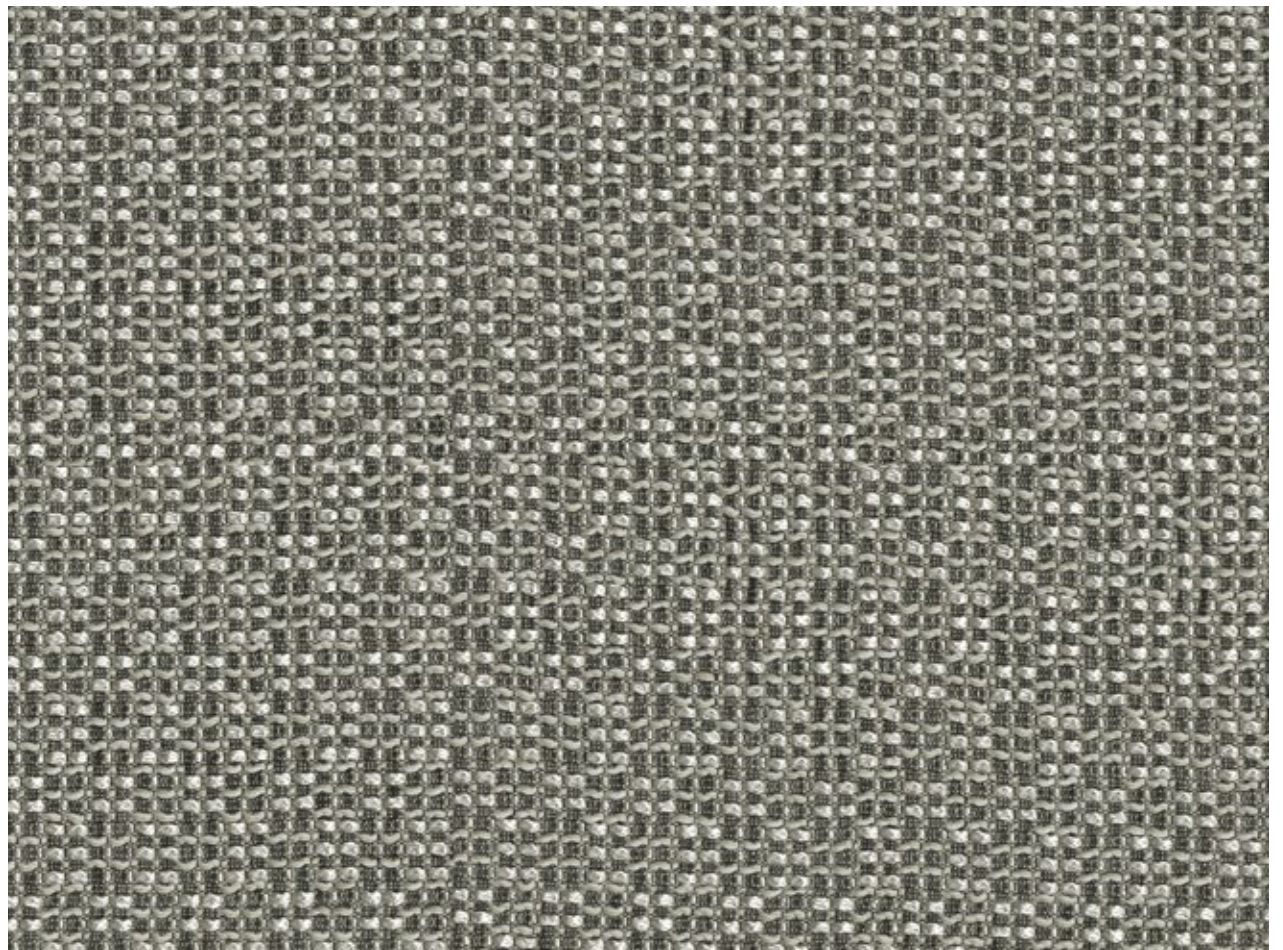
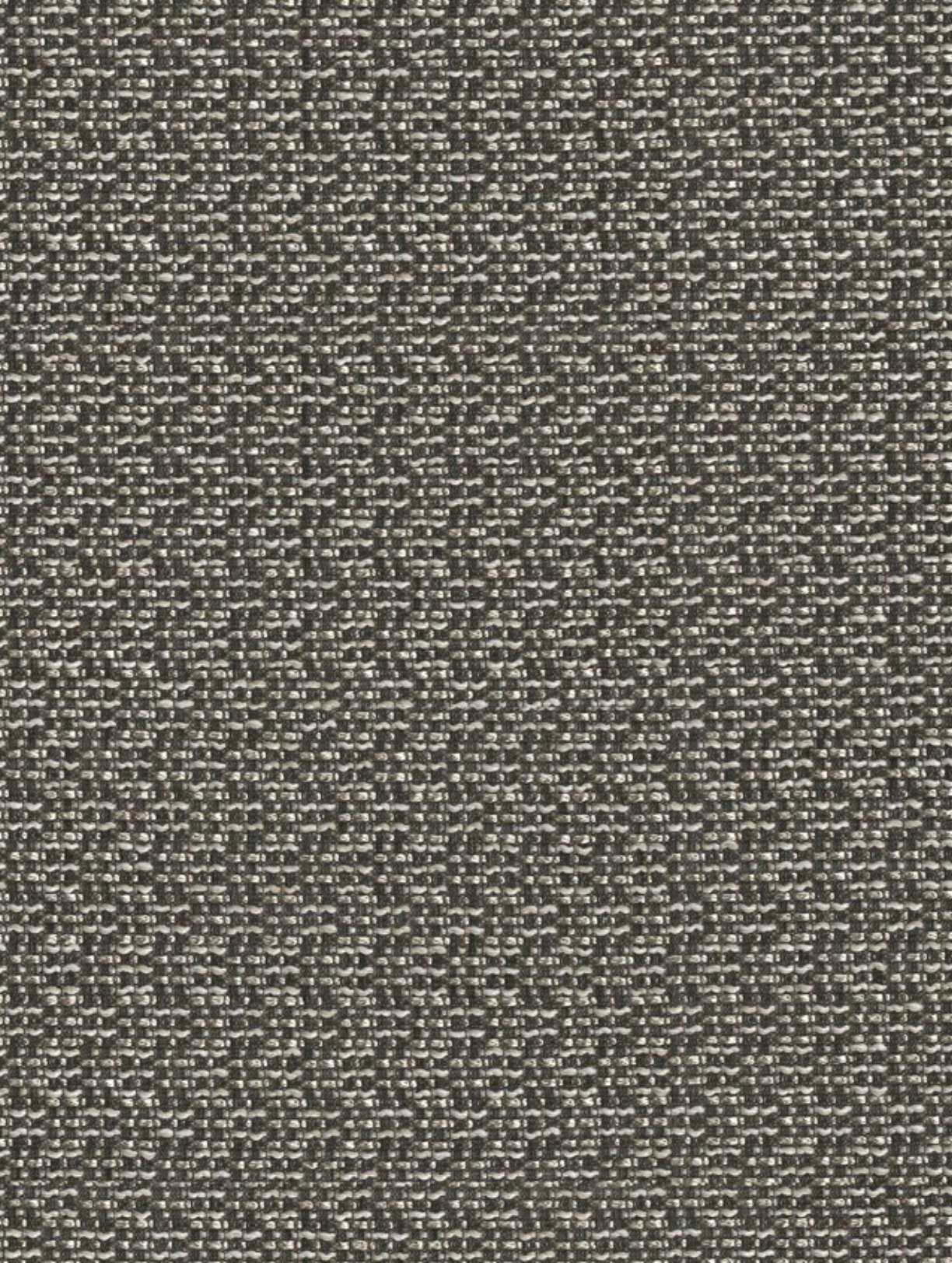


Celestia Sea Foam





**Above — Armchair** Nimbus Angora  
**Curtain** Night Sky Alabaster **Cushion Pouf** Fractals Sepia  
**Top left —** Nimbus Angora **Bottom left —** Nimbus Feather Gray



**Above** — Plato Bristol Black **Top Right** — Plato Pebble  
**Bottom Right** — Plato Woodland Grey



Stonehaze Driftwood



Stonehaze Greystone



Stonehaze Sea Foam



Stonehaze Warsand



Botticino Oatmeal



Botticino Storm Gray



Botticino Tobacco Brown

**Botticino**

With a marbled look, Botticino's layers carry the gravitas of eons. Lustrous veins add a majestic touch, enhancing the timeless allure of a texture that has fascinated through the ages.

Composition: 24% Recycled Polyester, 45% Polyester, 31% Cotton  
End Use: Multipurpose



Galactic Glacier Gray



Galactic Simply Taupe



Galactic Alabaster

**Galactic**

Galactic mirrors the cosmic ballet of stars and voids. Luminous bands, scattered clusters, and blank spaces streak together across an expanse in a mesmerising balance that inspires wonder.

Composition: 31% Recycled Polyester, 34% Cotton, 35% Polyester  
End Use: Drapery, Cushions



Celestia Alabaster



Celestia Driftwood



Celestia Pure Cashmere



Celestia Sea Foam

**Celestia**

Stitches like starlight weave across Celestia's patterned base. The effect is mesmerizing, conjuring swirling constellations and celestial bodies in a vibrant, boundless field.

Composition: 28% Recycled Polyester, 21% Polyester, 18% Cotton, 33% Viscose  
End Use: Drapery, Cushions



Comet Alabaster



Comet Driftwood



Comet Greystone



Comet Ink

**Comet**

Overlapping patterns create a sense of rising and falling in Comet. A shimmering spectacle, they gather in radiant arcs that form an elegant and cheerful fabric.

Composition: 76% Recycled Polyester,  
24% Ecovera Viscose

End Use: Upholstery, Cushions



Estuary Almond Buff



Estuary Oceanview



Estuary Pistachio Shell



Estuary Sedona Sage

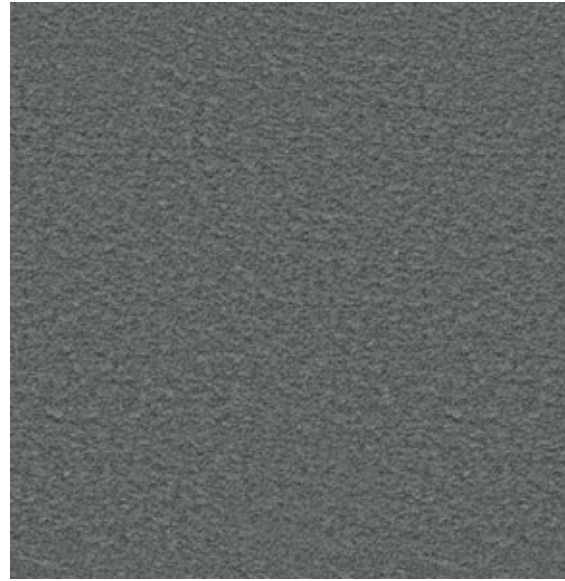
**Estuary**

Estuary captures vibrant life and rich textures with yarns of varying thickness and colour. Each distinguishable stitch contributes its unique character, harmoniously coming together with neighbors to form a robust and vital whole.

Composition: 100% Cotton  
End Use: Upholstery, Cushions



Cirrus Chanterelle Beige



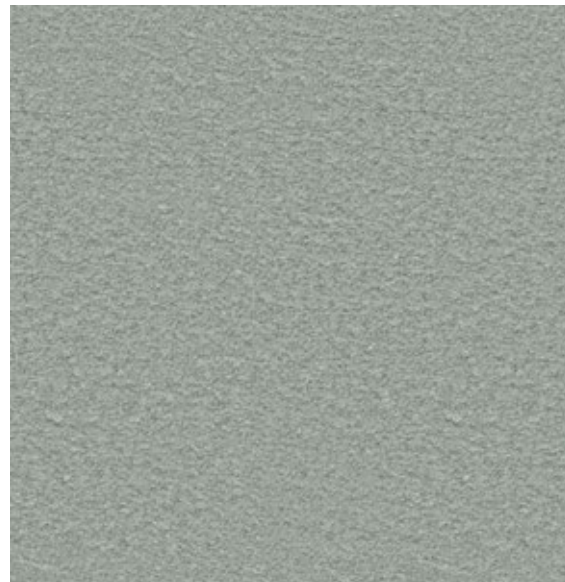
Cirrus Charcoal



Cirrus Mysterious Blue



Cirrus Feather Grey



Cirrus High Park Blue



Cirrus Marshmallow

**Cirrus**

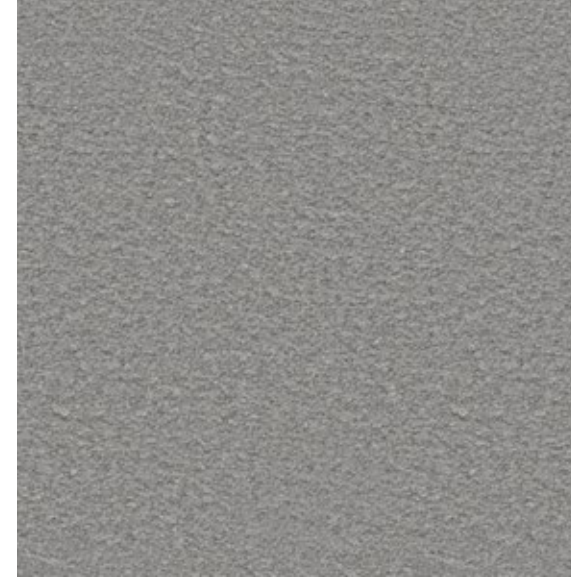
Robust, thick yarns in Cirrus create a rugged yet soft texture. The flat and even plushness delivers a comforting feel, making it a cozy addition to any space.

Composition: 100% Cotton  
End Use: Upholstery, Cushions

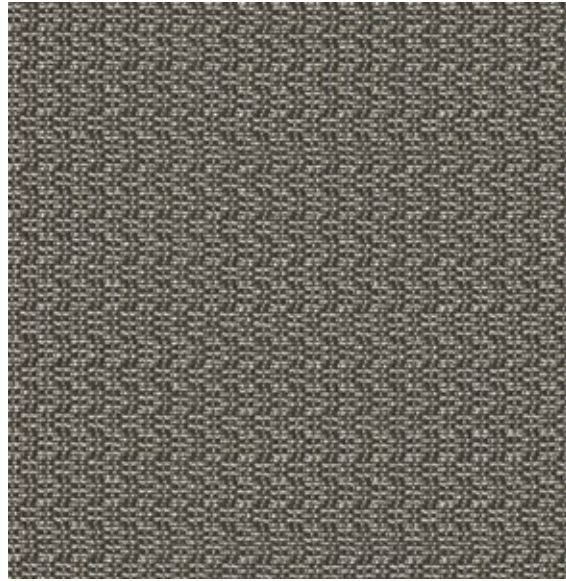




Cirrus October Mist



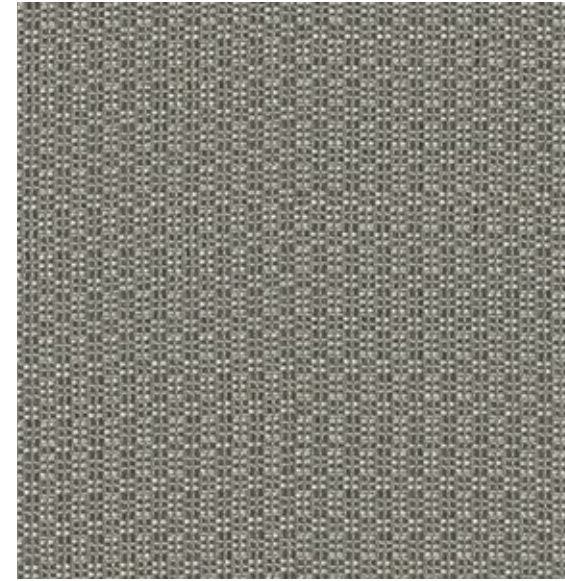
Cirrus Steel Grey



Plato Bristol Black



Plato Pebble



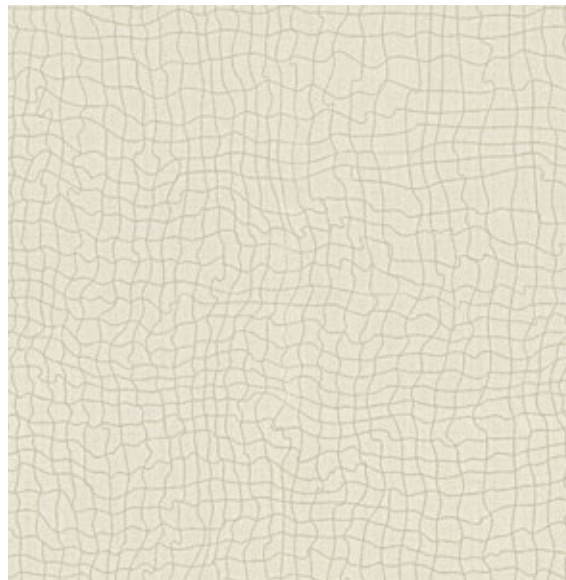
Plato Woodland Grey

**Plato**

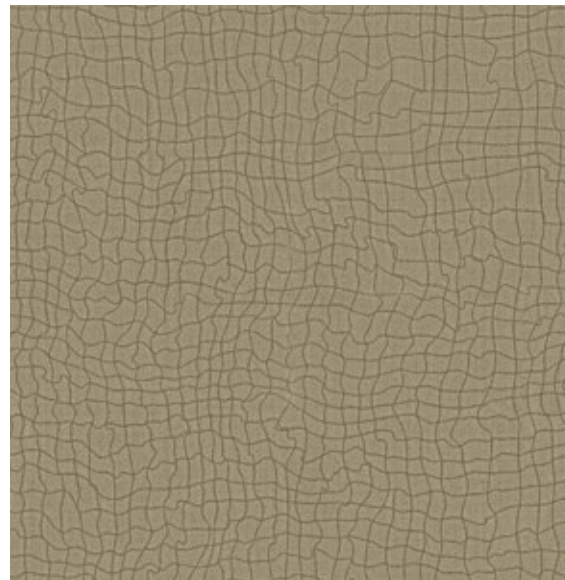
Plato's twisted yarns elegantly combine with bright stitches to create a delightful and dainty fabric. Fluid and rhythmic, this fabric offers a supple drape.

Composition: 100% Polyester

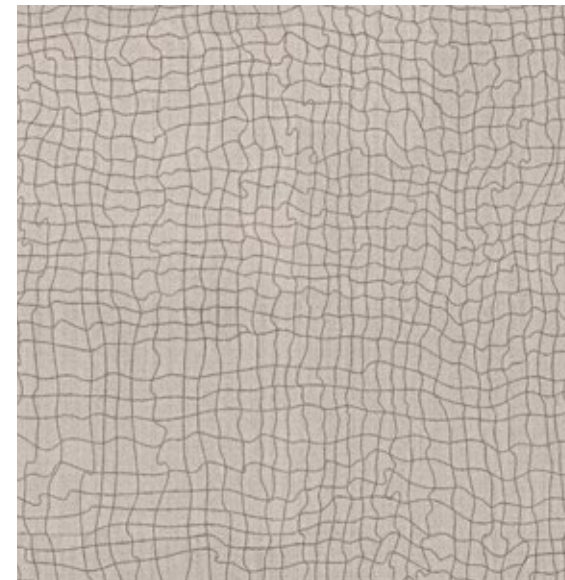
End Use: Drapery



Interstellar Alabaster



Interstellar Driftwood



Interstellar Stone Grey

**Interstellar**

Disparate, unpredictable journeys are intertwined into a single design in Interstellar. A gently patterned base adds to the cohesion, resulting in a tasteful and lightweight fabric.

Composition: 35% Polyester, 25% BCI Cotton, 35% Viscose, 5% Acrylic

End Use: Drapery, Cushions



Fractals Alabaster



Fractals Ink



Fractals Oyster Gray



Fractals Sea Foam



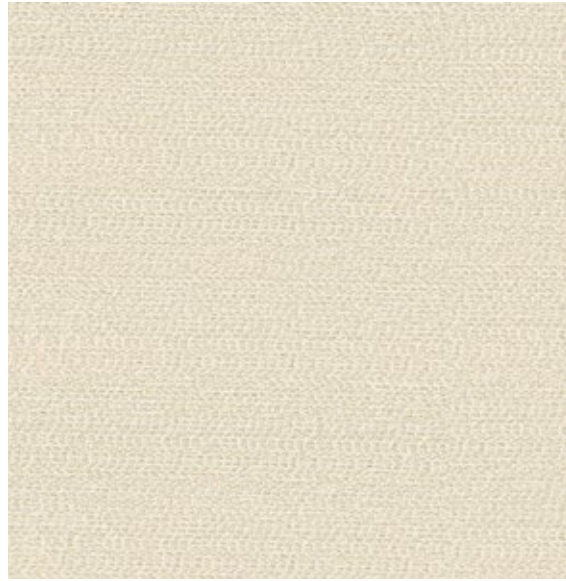
Fractals Sepia

**Fractals**

Shimmering highlights converge with matte undertones, infusing Fractals with a thrumming vibrance. The play of light breathes life into the pattern, lending it an immersive feel.

Composition: 25% Recycled Polyester, 55% BCI Cotton, 10% Ecovera Viscose, 10% Linen

End Use: Upholstery, Cushions



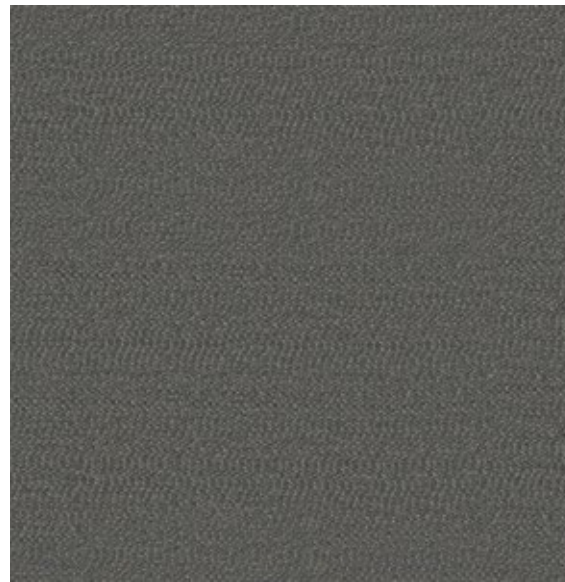
Mirage Alabaster



Mirage Driftwood



Mirage Eimwood



Mirage Ink



Mirage Sea Foam

**Mirage**

Like heat rising from the ground, twisting the air above it, Mirage's thin, wavering lines create a shimmering illusion. The fabric's blurring effect adds intrigue to its luxurious appeal.

Composition: 28% Polyester, 20% BCI Cotton, 29% Linen, 20% Viscose, 3% Acrylic  
End Use: Drapery, Cushions



Nimbus Angora



Nimbus Feather Gray

**Nimbus**

Fluid and unhurried, Nimbus's coils pile and spill as they intertwine. The interplay of textures and colors imbues it with a touch of dynamism, creating a fabric that is both soothing and visually captivating.

Composition: 19% Recycled Polyester, 10% Polyester, 32% BCI Cotton, 28% Linen, 10% Lyocell

End Use: Multipurpose



Nebulous Hemp



Nebulous Oyster White

**Nebulous**

Offering a smooth and weightless feel, Nebulous presents an ever-shifting look with wisps of clouds floating, gliding, and hovering, creating a fabric that embodies ethereal tranquillity.

Composition: 33% Recycled Polyester, 45% BCI Cotton, 22% Viscose

End Use: Drapery, Cushions



Night Sky Alabaster



Night Sky Grey Stone



Night Sky Pale Khaki



Night Sky Turtledove

**Night Sky**

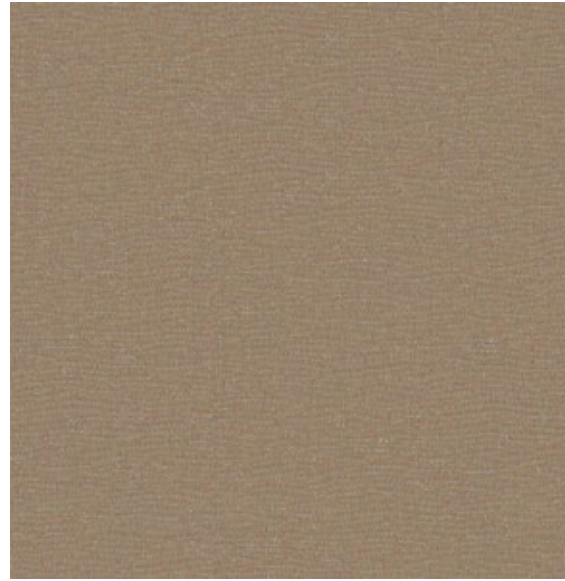
Velvet sky dusted with stars in a celestial theatre, Night Sky unfolds as a soft, glittering expanse. The gentle radiance, expressed through bright glimmers, weaves an atmosphere of serenity and stillness.

Composition: 36% Recycled Polyester, 24% Ecovera Viscose, 22% Polyester, 18% Lurex

End Use: Drapery, Cushions



Skyline Alabaster



Skyline Driftwood



Skyline Ink



Skyline Sea Foam



Skyline Warm Sand

**Skyline**

Rich, sleek, sophisticated, and soft, Skyline gleams with understated elegance, making it an ideal choice for creating a refined atmosphere.

Composition: 63% Recycled Polyester,  
37% Ecovera Viscose

End Use: Drapery, Cushions



Stonehaze Driftwood



Stonehaze Greystone



Stonehaze Sea Foam



Stonehaze Warmsand

**Stonehaze**

Stonehaze captures the rugged essence of stone in a sleek, contemporary aesthetic. Its textured surface hints at weathered rock, creating a unique and sophisticated material that seamlessly blends nature with contemporary design.

Composition: 67% Polyester, 28% Cotton, 5% Acrylic

End Use: Drapery, Cushions





Terraflair Alabaster



Terraflair Driftwood



Terraflair Graphite



Terraflair Sea Foam



Terraflair Stone Grey

**Terraflair**

Terraflair showcases a tight jacquard weave, combining multiple boucle and chenille yarns of varied densities. Its pixelated look engages the senses and invites the touch.

Composition: 19% Recycled Polyester, 16% BCI Cotton, 16% Ecovera Viscose, 49% Polyester

End Use: Upholstery, Cushions



Vortex Driftwood



Vortex Grey Stone



Vortex Ink



Vortex Marshmellow



Vortex Sea Foam

**Vortex**

Smooth and hypnotic, Vortex whispers of celestial journeys and swirling constellations. Gleaming accents catch the eye, adding a touch of ethereal beauty to a design that evokes both symmetry and endless possibilities.

Composition: 46% Recycled Polyester,  
54% Ecovera Viscose  
End Use: Upholstery, Cushions



Zenith Alabaster



Zenith Marshmallow

**Zenith**

Evoking a sense of exploration, Zenith's weave reflects a timeless fascination with discovery. Its grooves and contours vividly depict a world seen from above, rendered with meticulous detail in lustrous tones.

Composition: 25% Recycled Polyester, 16% BCI Cotton, 39% Viscose, 18% Linen, 2% Acrylic

End Use: Drapery, Cushions



Luxury Home Textiles

VAYA Home designs, curates and produces textiles for drapery and upholstery in a variety of fibers and tactile techniques.

Leveraging decades of textile design and production expertise, the Jaipuria Mill in collaboration with international creatives, conceived the VAYA Home brand to weave thoughtfully constructed fabrics for interior decorators globally.

Combining hand crafted arts with machine exacted techniques unique to the mill, the VAYA collections aim to delight and surprise through the use of pattern, materials, and colors in their textiles.

Our products are sold through leading retailers as cut length yardage and are suitable for residential and commercial application.

[www.vayahome.com](http://www.vayahome.com)  
[sales@vayahome.com](mailto:sales@vayahome.com)