

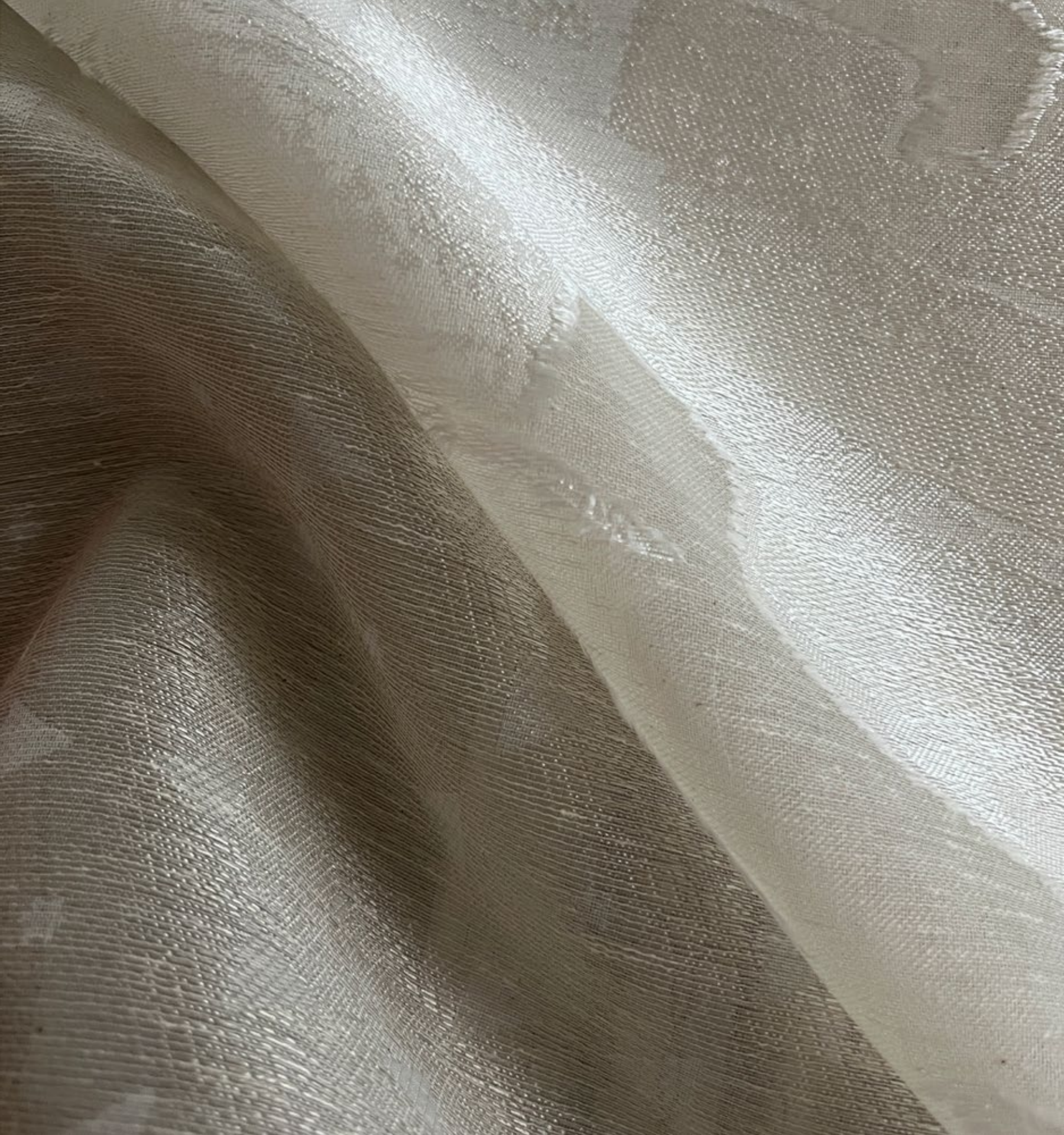


Luxury Home Textiles

Botta Sheers

www.vayahome.com
sales@vayahome.com





The Botta Sheers collection employs a mix of yarns and weaves to create stunning, resplendent sheer fabrics. Tantalizing patterns take on different looks as they interact with the light, bringing stunning finishing touches to elegant spaces.

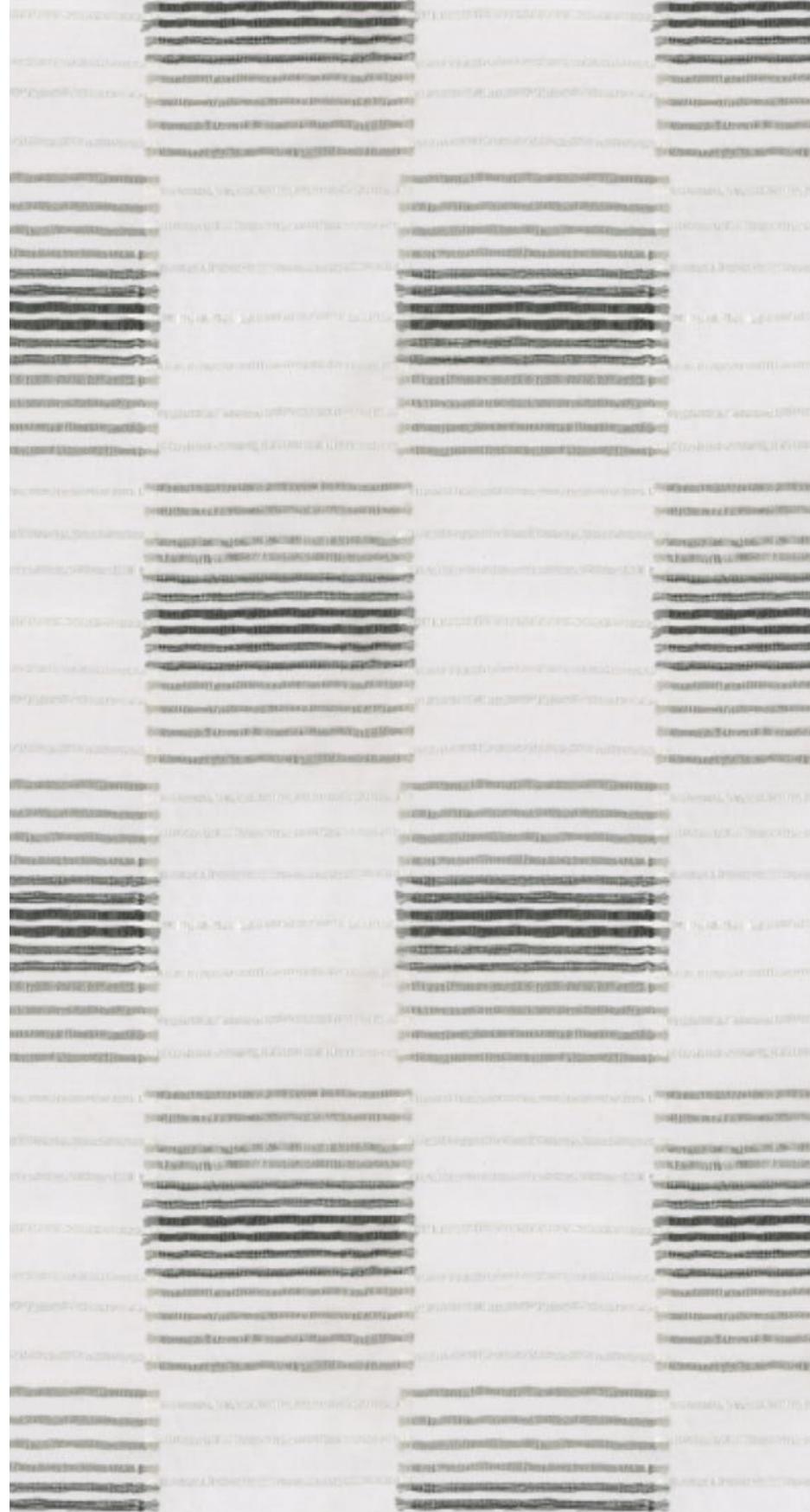


Above — Lawson Grey Mist
Right — **Fabric** Lawson Vanilla Ice





Lawson Grey Mist



Lawson Silver Birch



Lawson Banana Crepe



Above — Gavin Biscotti
Left — Fabric Lawson Frozen Dew





Gavin Biscotti



Gavin Porcelain



Gavin Turtle dove



Gavin Warm Sand



Above — Left to Right Harvey Tapioca, Henry Warm Sand



Above — Davenport Oatmeal



Above — Top to Bottom Goodwin Silver Grey, Franklin Pale Gold
Right — Curtain Henry Procelain





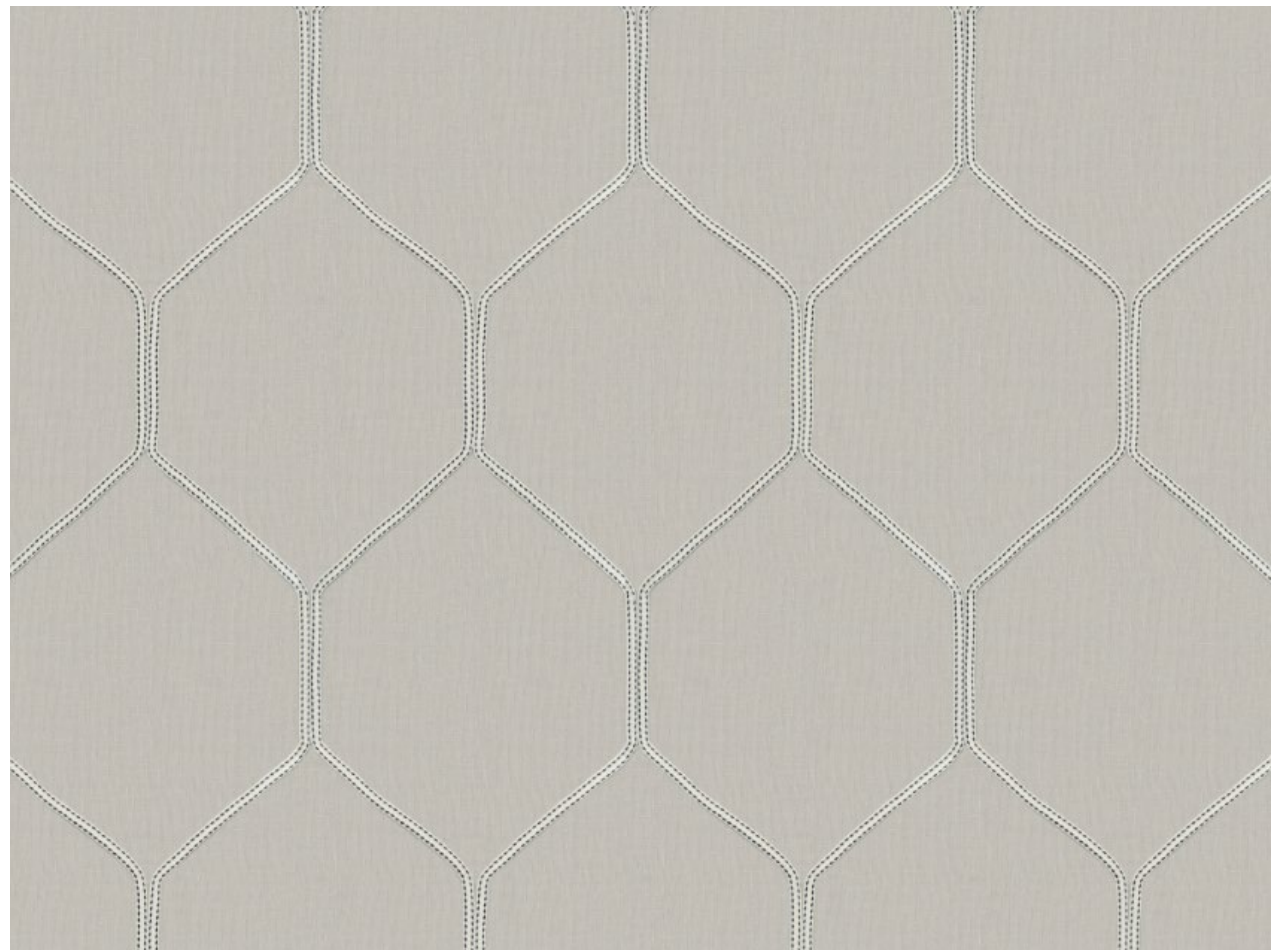
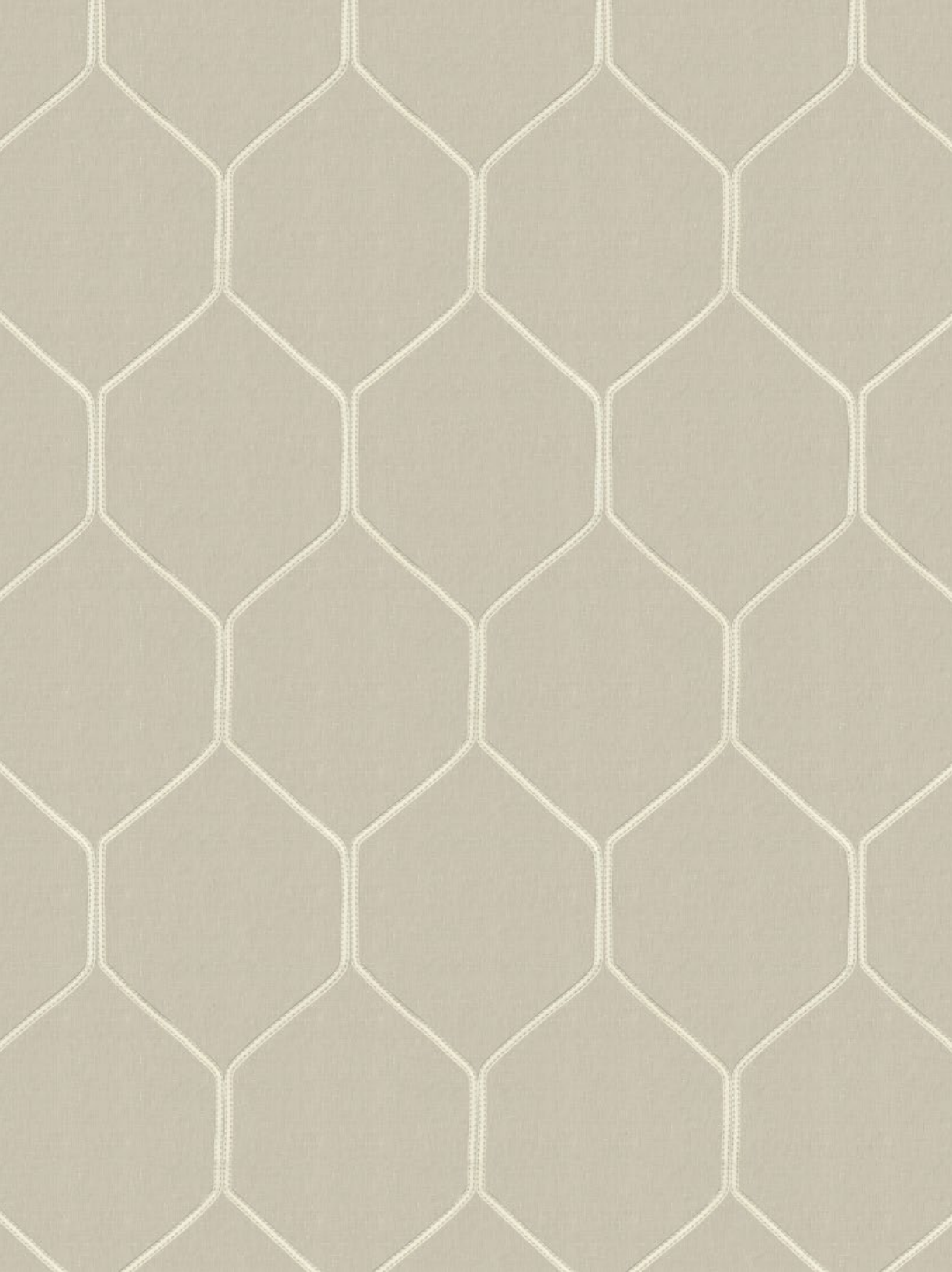
Above — Henry Sea Foam
Left — **Top to Bottom** Milmore Vanilla Ice, Henry Warm Sand



Above — Harris Warm Sand

Right — Top to Bottom Harris Dove Grey, Lawson Silver Birch





Above — Harris Warm Sand **Top Right** — Harris Snow
Bottom Right — Harris Dove Grey



Fabrics — Left to Right Lawson Banana Crepe, Gavin Warm Sand, Harvey Parchment, Brunel Warm Sand



Fabrics — Left to Right Franklin Pale Gold, Davenport Oatmeal



Above — Davenport Marshmallow



Above — Davenport Warm Sand



Above — Boyle Parchment
Left — Fabric Harvey Banana Crepe



Harvey Banana Crepe



Harvey Parchment



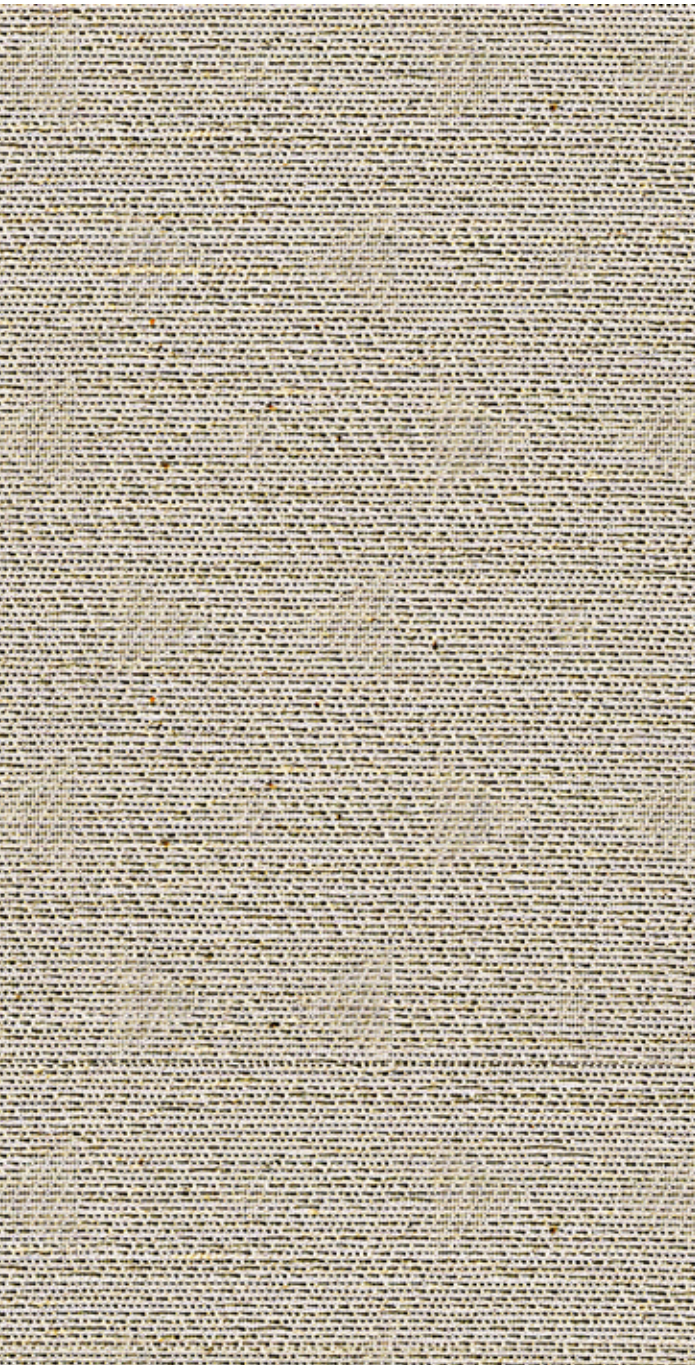
Harvey Tapioca



Above — Lawson Silver Birch

Right — Top to Bottom Franklin Parchment, Milmore Silver Birch, Burton Silver Birch

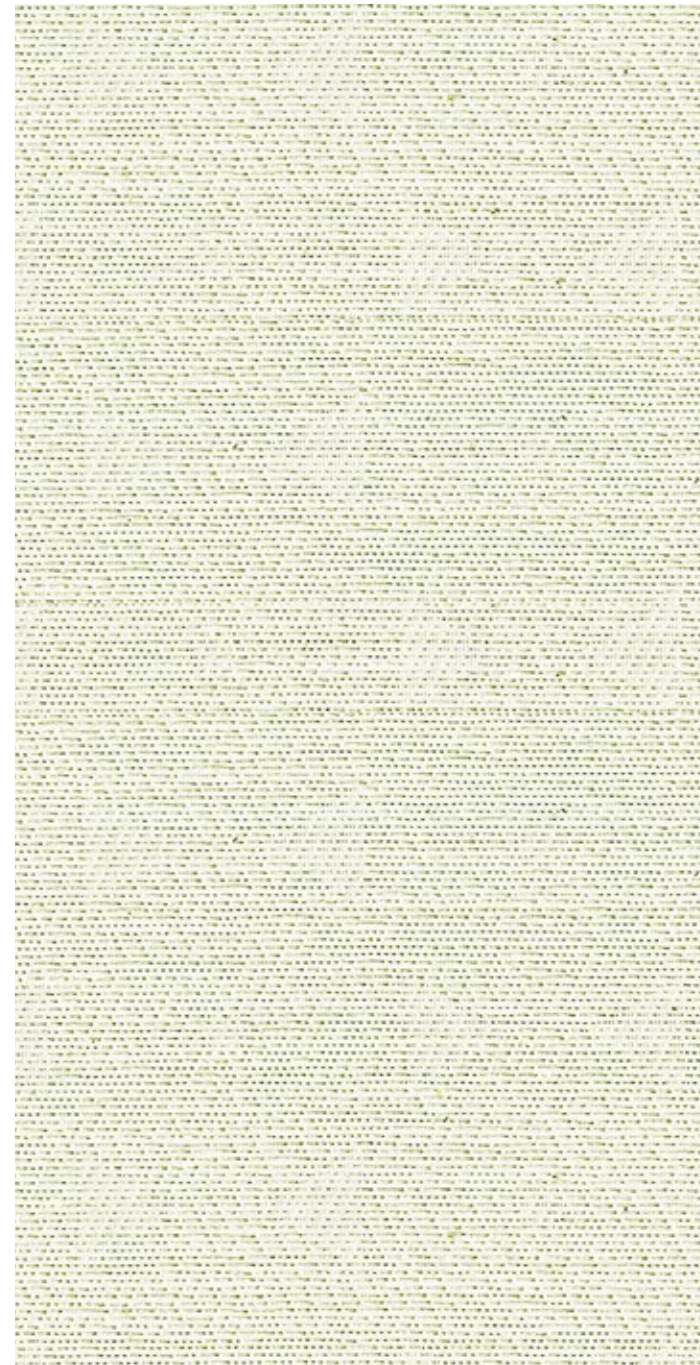




Franklin Pale Gold



Franklin Parchment



Franklin Pumice Stone



Franklin Silver Green





Above — Boyle Bright White

Left — **Top to Bottom** Boyle Vanilla Ice, Boyle Bright White, Boyle Parchment



Above — Boyle Antique White

Right — **Left to Right** Boyle Bright White, Boyle Vanilla Ice





Burton Silver Birch



Burton Silver Birch



Burton Warm Sand



Fabrics — Left to Right Goodwin Bright White, Lawson Frozen Dew, Etna Pale Aqua, Milmore Vanilla Ice, Catania Pale Aqua



Above — Goodwin Bright White

Right — Top to Bottom Goodwin Silver Grey, Milmore Silver Birch, Burton Silver Birch





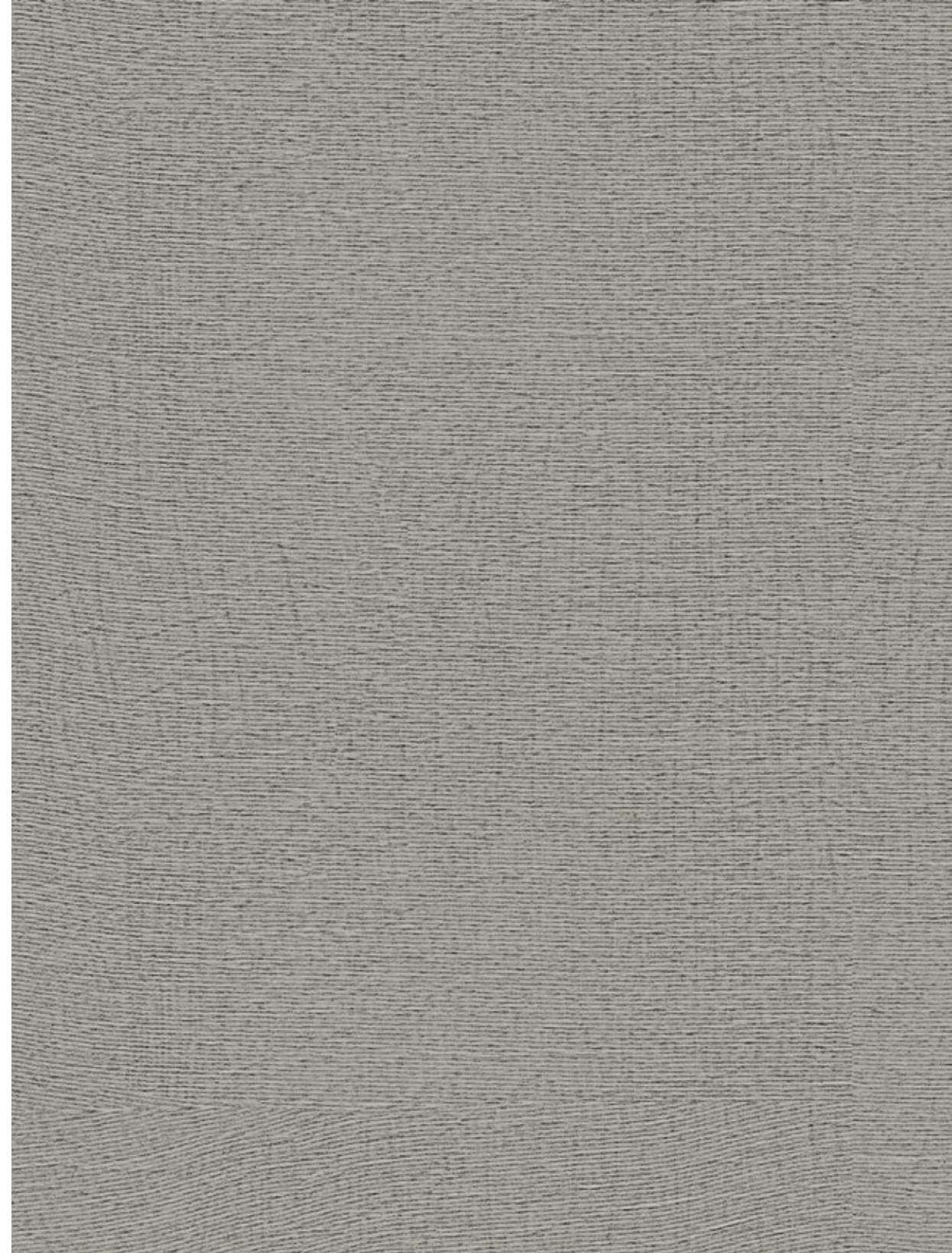
Goodwin Bright White



Goodwin Fog



Goodwin Silver Grey



Above — Milmore Silver Birch
Top left — Milmore Silver Green **Bottom left** — Milmore Vanilla Ice



Fabrics — Top to Bottom Brunel Warm Sand, Harvey Parchment



Above — Brunel Porcelain



Above — Brunel Marshmallow



Boyle Antique White



Boyle Bright White



Boyle Parchment



Boyle Vanilla Ice

Boyle

Whimsical with a creative flair, Boyle is a woven sheer with a painted look. Layered to look like thick brushstrokes, this sheer brings an imaginative element to a space

Composition: 40% Polyester, 42% Viscose, 18% BCI Cotton

End Use: Drapery



Brunel Marshmallow



Brunel Porcelain



Brunel Warm Sand

Brunel

Lines meet and intersect to form a pleasing abstract web in Harvey. This sheer exudes both grace and strength, creating a beautifully balanced aesthetic.

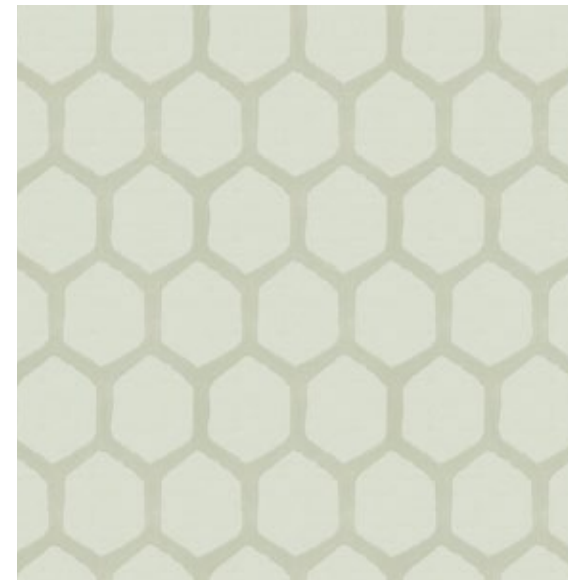
Composition: 63% Cotton, 37% Polyester
End Use: Drapery



Burton Silver Birch



Burton Silver Green



Burton Warm Sand

Burton

Rough edges and rounded corners lend an organic charm to Burton. With a comfortable and pleasing aesthetic, it brings a friendly and inviting feel with it.

Composition: 66% Polyester, 34% Cotton
End Use: Drapery



Davenport Marshmallow



Davenport Oatmeal



Davenport Warm Sand

Davenport

A tasteful sheer with chic simplicity, Davenport features delicate lines in twisted yarn that bring subtle intricacy. Neutral colors bring a sense of calm, while introducing a hint of vibrance for a refined touch.

Composition: 60% Polyester, 35% Cotton, 5% Linen
End Use: Drapery



Goodwin Bright White



Goodwin Fog



Goodwin Silver Grey

Goodwin

Light and dreamy, Goodwin combines an open weave, burnished colours, and an array of patterns to create an alluring, almost ethereal sheer.

Composition: 41% Polyester, 59% Viscose
End Use: Drapery



Franklin Pale Gold



Franklin Parchment



Franklin Pumice Stone



Franklin Silver Green

Franklin

Franklin displays a charming pattern of simple triangles circling into suns, peeking out from their glossy base. The design effortlessly radiates a sense of warmth and sophistication.

Composition: 49% Polyester, 35% Viscose, 16% BCI Cotton

End Use: Drapery



Gavin Biscotti



Gavin Porcelain



Gavin Turtle dove



Gavin Warm Sand

Gavin

Gavin features a bold, applique-like pattern on a light base. Its subdued colours provide the perfect balance that allows for an appreciation of the design of this semi-sheer.

Composition: 58% Polyester, 42% Cotton
End Use: Drapery



Harris Dove Gray



Harris Snow



Harris Warm Sand

Harris

Harris' robust flat cords, accented with color, curve into a large hexagonal repeat. Softened by rounded corners, this sheer fabric complements a variety of styles.

Composition: 60% Polyester, 35% Cotton, 5% Linen

End Use: Drapery



Harvey Banana Crepe



Harvey Parchment



Harvey Tapioca

Harvey

Sophisticated with light dazzle, Harvey offers a series of interesting light effects. Where the twinkle first catches the eye, a distinctive checkered pattern is revealed.

Composition: 24% Polyester, 20% BCI Cotton, 29% Viscose, 7% Lurex

End Use: Drapery



Henry Brown Rice



Henry Porcelain



Henry Sea Foam



Henry Warm Sand

Henry

Henry is a stately sheer, its linen look brightened by a stately pattern. Cord embroidery runs between neat borders for a sturdy feel and sculpted quality.

Composition: 60% Polyester, 35% Cotton, 5% Linen

End Use: Drapery



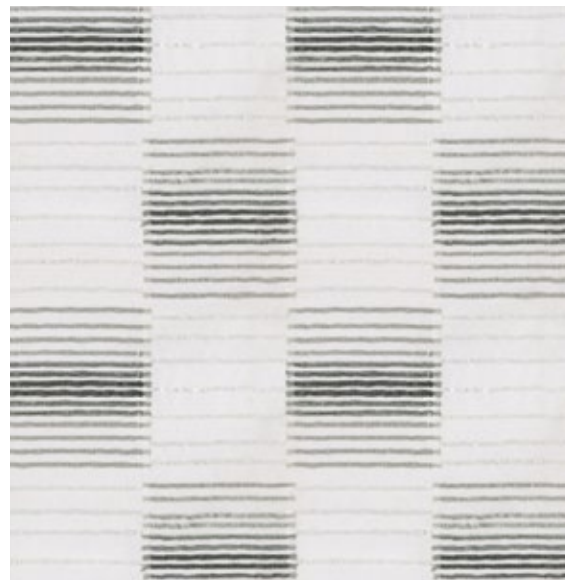
Lawson Banana Crepe



Lawson Frozen Dew



Lawson Grey Mist



Lawson Silver Birch



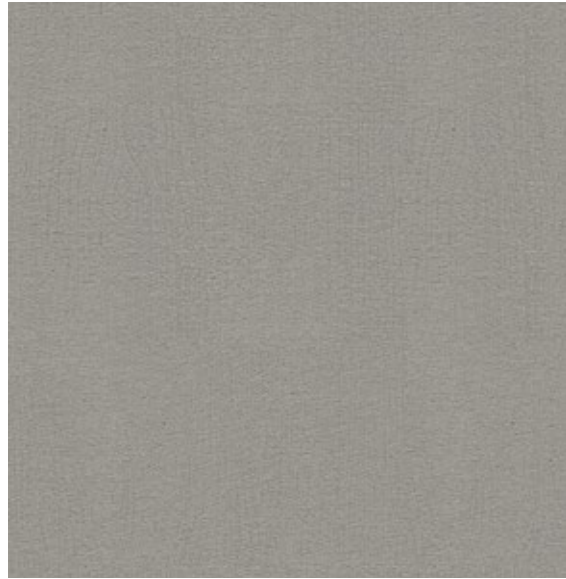
Lawson Vanilla Ice

Lawson

Lawson's stacked bands, their brushed ends meeting in soft tufts, make for a neat, fun, and elegant sheer fabric. The lustre and columns create an interesting visual effect that engages.

Composition: 24% Polyester, 9% BCI Cotton, 67% Viscose

End Use: Drapery



Milmore Silver Birch



Milmore Silver Green



Milmore Vanilla Ice

Milmore

Fine zari strands add a sheen to Milmore, its pattern like a loosely woven net. The relaxed lines, flowing in freeform, create an open, breathable design.

Composition: 62% Polyester, 29% Zari, 9% BCI Cotton

End Use: Drapery



Luxury Home Textiles

VAYA Home designs, curates and produces textiles for drapery and upholstery in a variety of fibers and tactile techniques.

Leveraging decades of textile design and production expertise, the Jaipuria Mill in collaboration with international creatives, conceived the VAYA Home brand to weave thoughtfully constructed fabrics for interior decorators globally.

Combining hand crafted arts with machine exacted techniques unique to the mill, the VAYA collections aim to delight and surprise through the use of pattern, materials, and colors in their textiles.

Our products are sold through leading retailers as cut length yardage and are suitable for residential and commercial application.

www.vayahome.com
sales@vayahome.com