



Luxury Home Textiles

Benaras Silks

www.vayahome.com
sales@vayahome.com



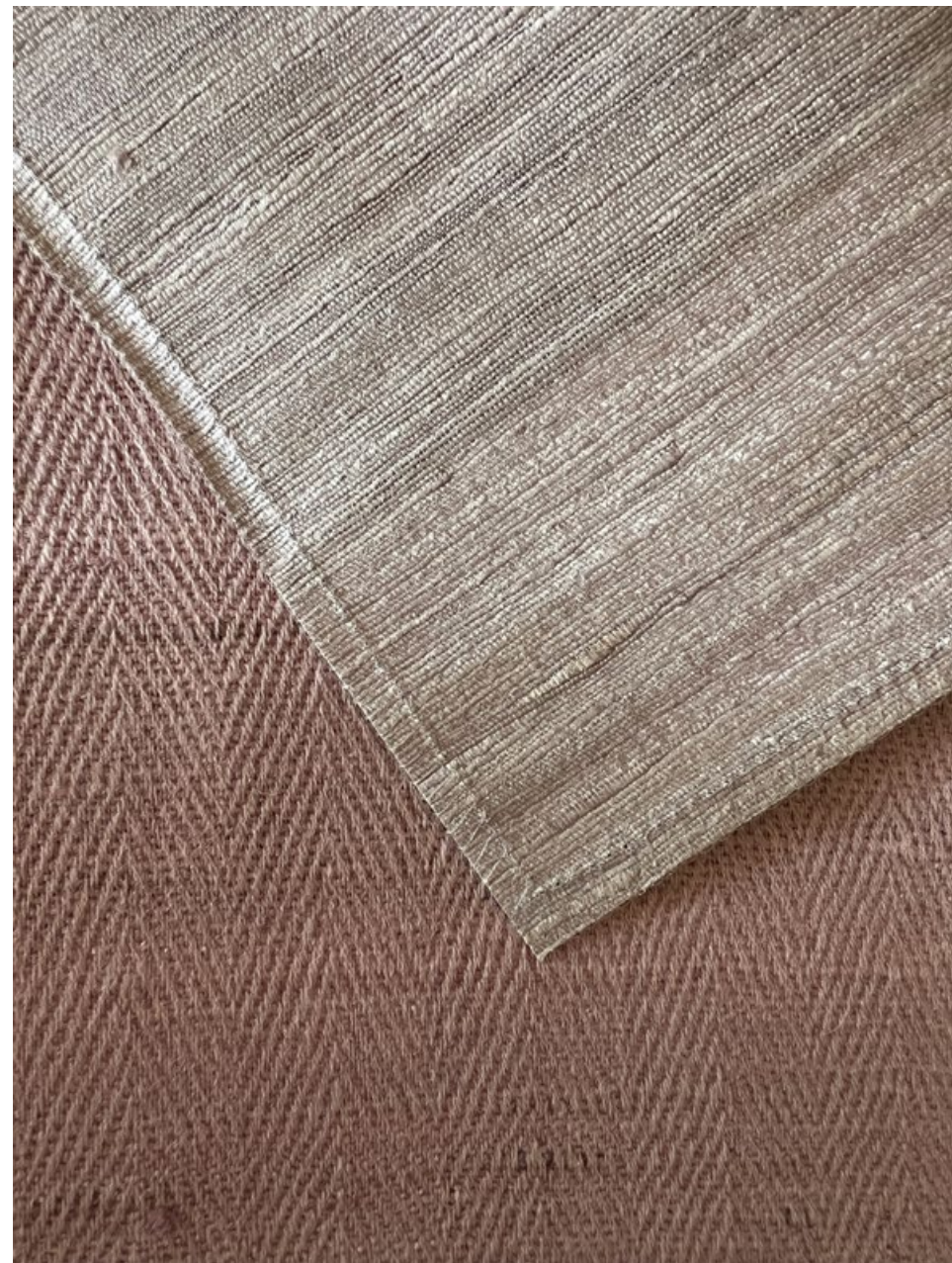


Woven by expert handloom weavers, Amari, Kosi, and Kanishka are exceptional examples of India's silk weaving heritage. Spun yarns with slubs define these fabrics, giving them a rustic yet sophisticated look. Using only natural silk and wool yarns, these fabrics have a soft hand and a generous drape.



Above — Kanishka Brownie
Right — Top to Bottom Kanishka Cobblestone, Kosi Cobblestone, Kanishka Oatmeal





Above — Top to Bottom Kanishka Brownie, Kosi Brownie
Left — Top to Bottom Kanishka Cobblestone, Kosi Cobblestone



Fabrics — Left to Right Amari Misty Rose, Kosi Antelope, Kanishka Antelope, Amari Antelope



Fabrics — Top to Bottom Kosi Ginger, Amari Blue Steel, Kanishka Blue Steel



Fabrics — Left to Right Kosi Russet, Kanishka Russet, Kosi Blue Steel



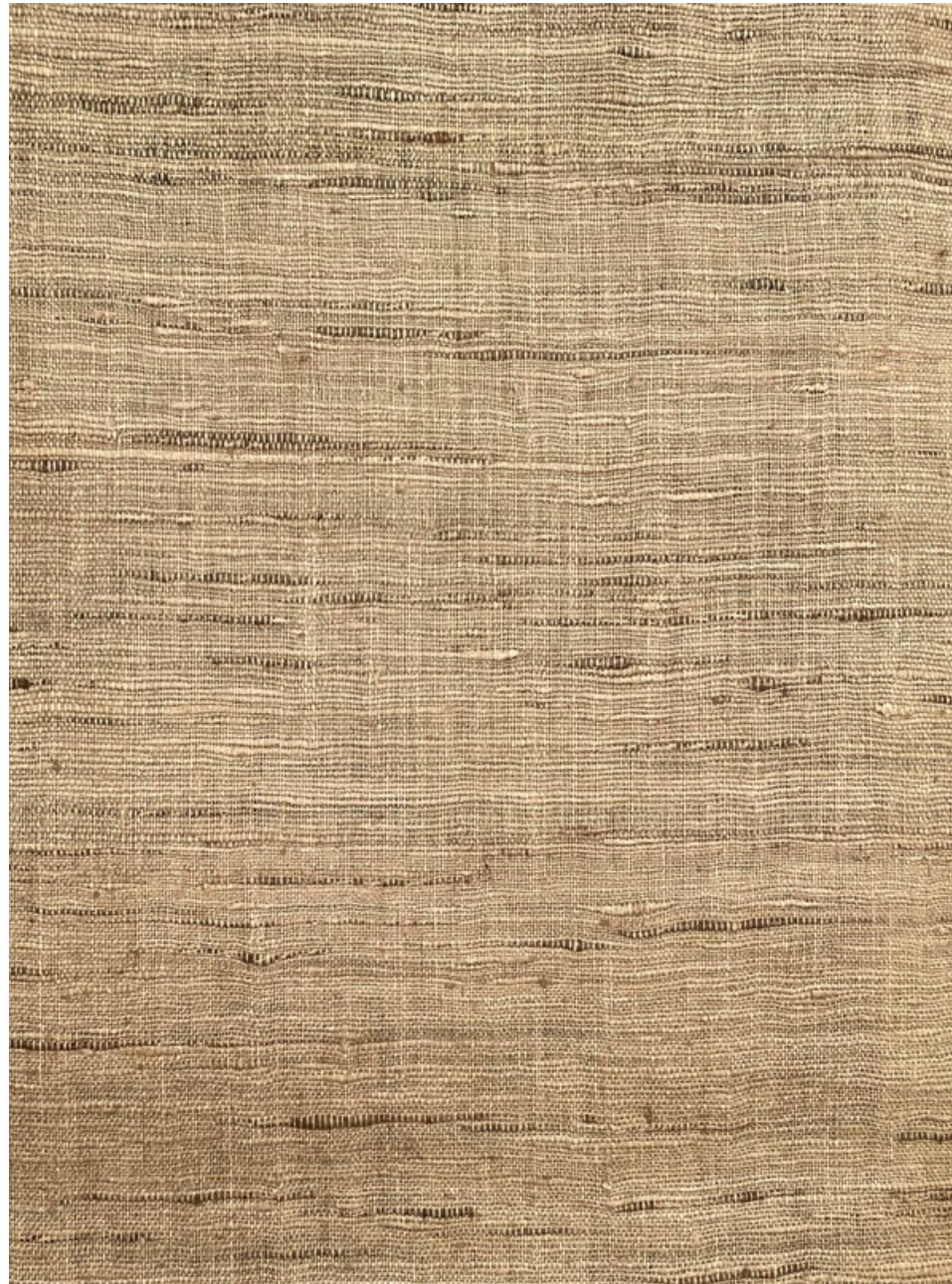
Above — Top to Bottom Amari Opal Blue, Kanishka Opal Blue



Above — Left to Right Amari Sandshell, Kosi Doeskin



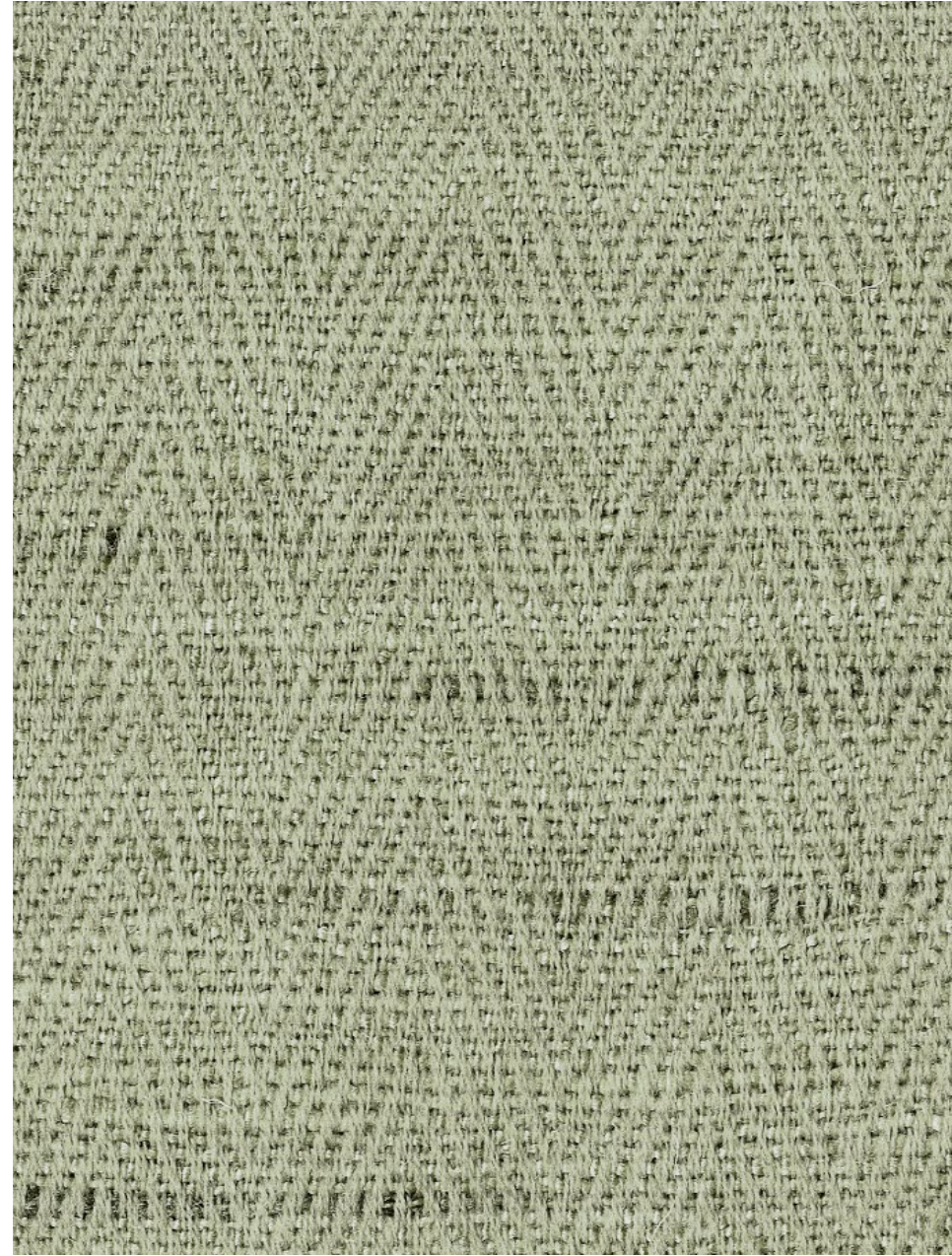
Fabrics — Left to Right Kanishka Sand, Amari Sand,
Kosi Doeskin



Above — Kanishka Sand

Right — **Top to Bottom** Kosi Sage, Kanishka Sage, Amari Sage





Above — Amari Sage
Left — **Left to Right** Kosi Basil, Kanishka Basil



Above — Left to Right Kosi Frost Grey, Kanishka Frost Grey, Amari Frost Grey



Fabrics — Left to Right Amari Cobblestone, Kanishka Dune, Kosi Sand



Fabrics — Top to Bottom Kanishka Misty Rose,
Kosi Misty Rose



Above — Top to Bottom Kosi Opal Blue, Amari Basil



Above — Left to Right Kosi Tapioca, Kanishka Tapioca



Amari Antelope



Amari Basil



Amari Blue Steel



Amari Brownie



Amari Cobblestone



Amari Doeskin



Amari Frost Grey



Amari Misty Rose



Amari Opal Blue



Amari Sage



Amari Sand



Amari Sandshell

Amari

Blending silk and wool yarns to hand weave a herringbone pattern, Amari is medium weight drapery fabric. With slubs interwoven into the the herringbone weave, we get a variegated effect on the fabric surface. The finely finished wool gives the fabric a supple hand that is beautiful to the senses.

Composition: 70% Silk, 30% Wool
End Use: Drapery, Cushions



Kanishka Antelope



Kanishka Basil



Kanishka Blue Steel



Kanishka Brownie



Kanishka Cobblestone



Kanishka Doeskin



Kanishka Dune



Kanishka Frost Grey



Kanishka Ginger



Kanishka Misty Rose



Kanishka Oatmeal



Kanishka Opal Blue

Kanishka

Multiple silk yarns have been hand spun together to create the special yarn that gives the fabric Kanishka an unmistakable texture. Handwoven for drapery, this fabric has a special finish that brings out the lustre in an otherwise matt yarn. This quality is woven by expert hand weavers that have been creating beautiful textiles for our mill for generations.

Composition: 100% Silk
End Use: Drapery, Cushions



Kanishka Russet



Kanishka Sage



Kanishka Sand



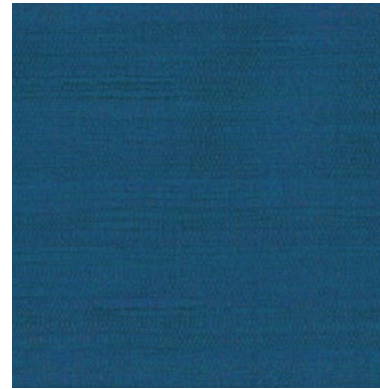
Kanishka Tapioca



Kosi Antelope



Kosi Basil



Kosi Blue Steel



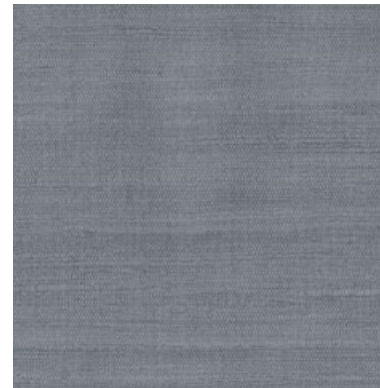
Kosi Brownie



Kosi Cobblestone



Kosi Doeskin



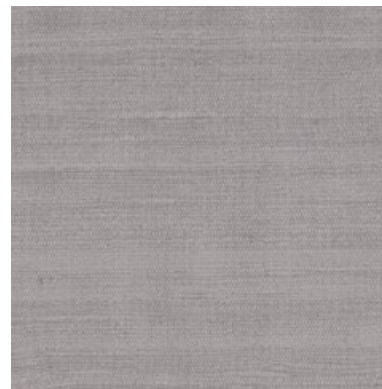
Kosi Frost Grey



Kosi Ginger



Kosi Misty Rose



Kosi Oatmeal



Kosi Opal Blue



Kosi Russet

Kosi

A light handwoven silk with spun yarns, Kosi is a dreamy quality that acts as a semi sheer. With this varied slubs and a matt finish, the fabric gives a rugged yet chic look. Its soft hand blows in the wind, bringing volume and character to the window.

Composition: 100% Silk
End Use: Drapery, Cushions



Kosi Sage



Kosi Sand



Kosi Sandshell



Kosi Tapioca



Luxury Home Textiles

VAYA Home designs, curates and produces textiles for drapery and upholstery in a variety of fibers and tactile techniques.

Leveraging decades of textile design and production expertise, the Jaipuria Mill in collaboration with international creatives, conceived the VAYA Home brand to weave thoughtfully constructed fabrics for interior decorators globally.

Combining hand crafted arts with machine exacted techniques unique to the mill, the VAYA collections aim to delight and surprise through the use of pattern, materials, and colors in their textiles.

Our products are sold through leading retailers as cut length yardage and are suitable for residential and commercial application.

www.vayahome.com
sales@vayahome.com